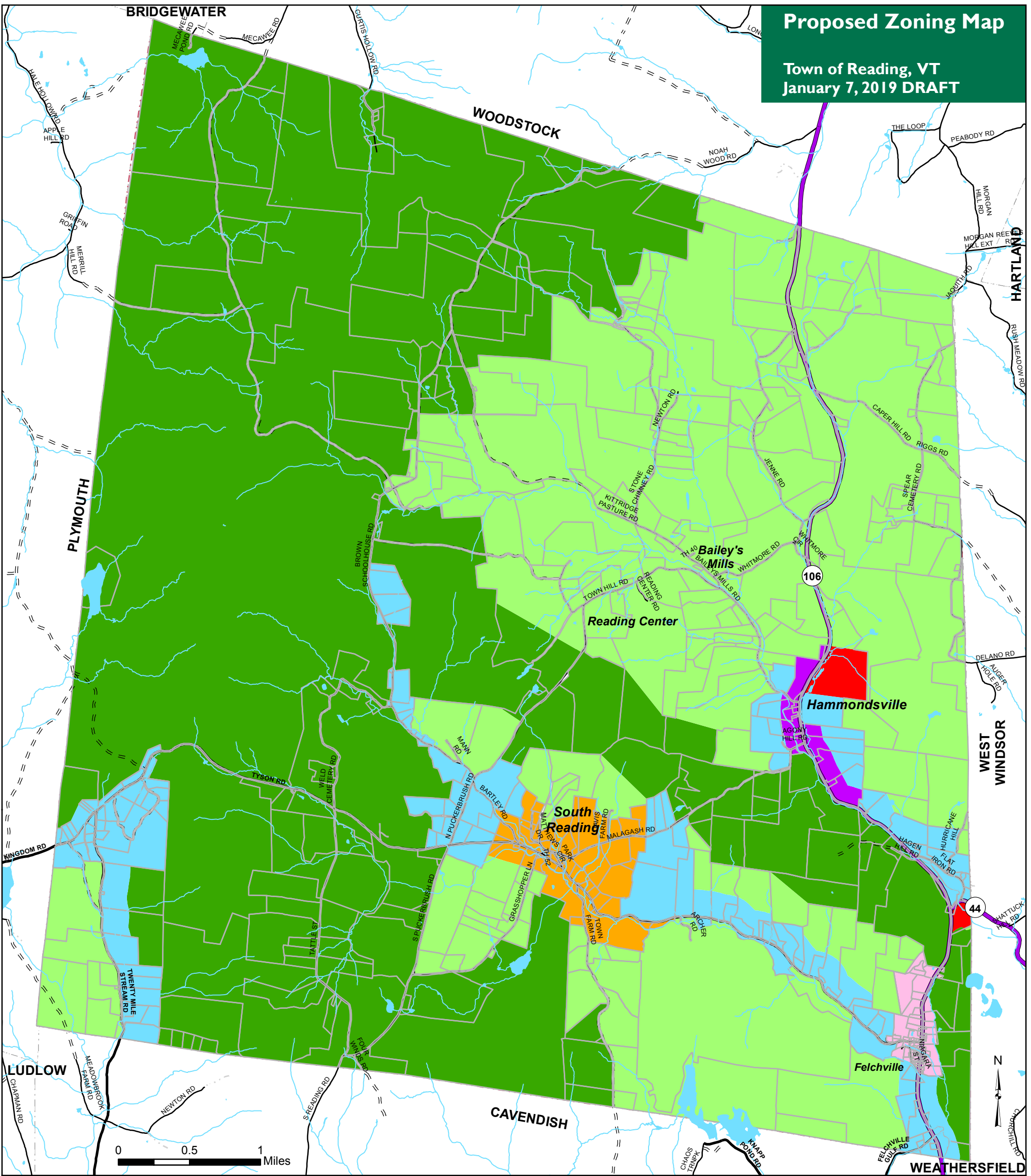


Proposed Zoning Map

Town of Reading, VT
January 7, 2019 DRAFT



VT State Plane, Meters, NAD 83
Data depicted on this map are for planning purposes only and are based on best available information. Some of the data do not line up.

Proposed Zoning Districts

- | | |
|--|---|
| Rural/ Conservation (RC-25) | VT State Highway |
| Rural Residential (RR-10) | Class 2 Town Highway |
| Rural Residential (RR-5) | Class 3 Town Highway |
| Residential (South Reading) (R-1) | Class 4 Town Highway |
| Residential/ Commercial (Hammondsville) (RC-A) | Legal Trail (Reading only) |
| Residential/ Commercial (Felchville) (RC-B) | Private Road (Reading only) |
| Industrial/ Mining (IM) | River or Stream |
| | Lake or Pond |
| | Parcels (TerraMap 2016) |
| | Town Boundary |

Data Sources:
Zoning (DRAFT) (RPC January 2019), Waterbodies (VHD 2010), Road centerline (VTrans 2018), Parcels (TerraMap 2016), Town Boundaries (RPC 2011 and VCGI 2012).



SOUTHERN WINDSOR COUNTY
REGIONAL PLANNING COMMISSION
P.O. Box 320, Ascutney, VT 05030
802-674-9201 www.swcrpc.org

For planning purposes only
Not for regulatory interpretation
Map last revised: January 7, 2019