

Southern Windsor County Park and Ride Annual Report

December 2018



On the second Tuesday of every month (where possible) Southern Windsor County Regional Planning Commission counts the number of vehicles parked in the Park and Ride lots along I-91. The counts are done in the morning between 9am and 11am at exits 7 (Springfield), 8 (Weathersfield/ Ascutney) and 9 (Hartland/Windsor). These parking lots are part of Southeast Vermont Transit's (SEVT, formerly Connecticut River Transit) Upper Valley Commuter Routes which travel up I-91 to the White River Junction VT/ Hanover NH area.

Every year the Vermont Agency of Transportation (VTrans) requests that all regional planning commissions across the state do counts on particular months at particular times.

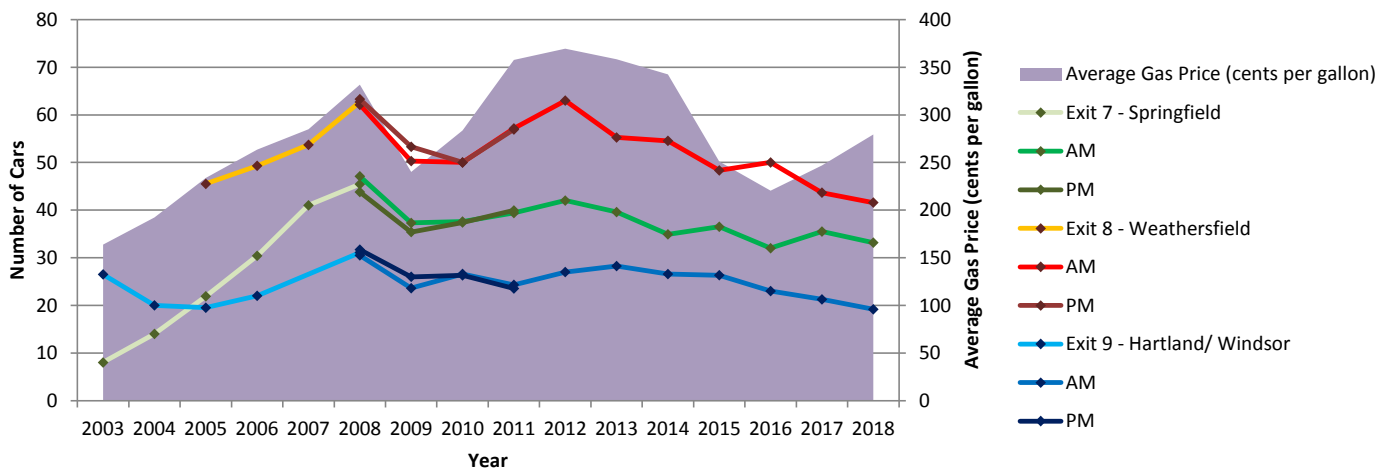
The region also includes two municipal park and ride lots - on VT-103 in Ludlow next to the fire station, and on VT-106 in Weathersfield just north of VT-131/ Downers. Counts are done on these lots periodically and are available upon request.

Yearly Activity in Park and Ride Lots

	Exit 7 - Springfield			Exit 8 - Weathersfield			Exit 9 - Hartland/ Windsor			Average Gas Price (cents per gallon)
	AM&PM	AM	PM	AM&PM	AM	PM	AM&PM	AM	PM	
2003	8		¹			²	27		¹	163.8
2004	14		¹			²	20		¹	192.3
2005	22		¹	46		¹	20			233.8
2006	30			49			22			263.5
2007	41			54					²	284.9
2008		47	44		62	63		31	32	331.7
2009		37	35		50	53		24	26	240.1
2010		38	37		50	50		27	26	283.6
2011		39	40		57	57		24	24	357.7
2012		42			63			27		369.5
2013		40			55			28		358.4
2014		35			55			27	³	342.5
2015		37			48			26	⁴	251.0
2016		32			50			23		220.4
2017		36			44			21		246.9
2018		33			42			19		279.4

¹ Only one or two counts used for the average
² No counts
³ Hartland P&R was closed from May to September for
⁴ Springfield P&R was closed from May to August for upgrade.
 Average Yearly Gas Price from the Energy Information Administration ("Motor Gasoline Retail Prices, US City Average"). Downloaded January 22, 2019.
http://www.eia.gov/totalenergy/data/monthly/pdf/sec9_6.pdf

Yearly averages in Park and Ride Lots - 2003 - 2018



Monthly Activity in Park and Ride Lots

	Exit 7 - Springfield			Exit 8 - Weathersfield			Exit 9 - Hartland/ Windsor			Average Gas Price (cents per gallon)
	2017	2018	% capacity	2017	2018	% capacity	2017	2018	% capacity	
January	36	31	29%	40	48	74%	21	17	31%	266.8
February	35	36	34%	45	50	77%	16	13	24%	274.9
March	34	29	27%	50	51	78%	18	30	55%	268.1
April	33	29	27%	52	47	72%	22	16	29%	275
May	38	32	30%	44	36	55%	16	19	35%	291.6
June	35	36	34%	55	49	75%	29	8	15%	303.6
July	34	29	27%	40	34	52%	31	20	36%	295.4
August	26	38	36%	38	35	54%	14	23	42%	294.9
September	47	34	32%	41	29	45%	23	19	35%	293.2
October	29	37	35%	39	37	57%	27	24	44%	292.2
November	44	25	24%	40	41	63%	20	21	38%	284.9
December	35	42	40%	40	42	65%	18	20	36%	262.3
Average	36	33	31%	44	42	64%	21	19	35%	282.6
Ave. percentage of Vermont Plates	67%	67%		47%	48%		87%	85%		

New England Weekly Gas Price from the Energy Information Administration ("All Grades All Formulations Retail Gasoline Prices") Released 12/10/2018.
<http://www.eia.gov/petroleum/gasdiesel/xls/pswrgvwall.xls> "Data 12" tab

