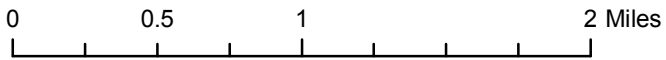
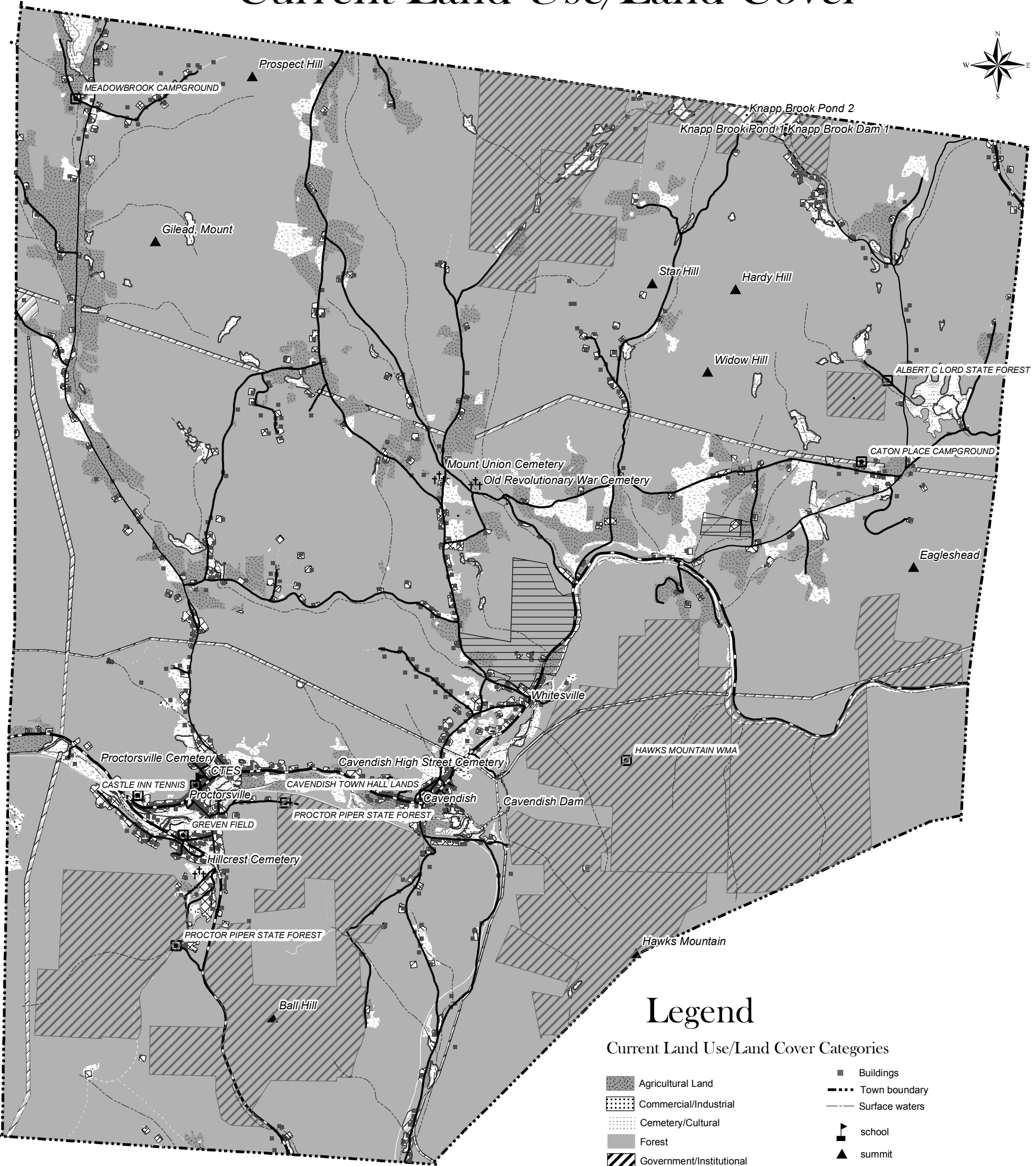


TOWN OF CAVENDISH

Current Land Use/Land Cover



Legend

Current Land Use/Land Cover Categories

- | | | | |
|--|-------------------------------------|--------------|--------------------------|
| | Agricultural Land | | Buildings |
| | Commercial/Industrial | | Town boundary |
| | Cemetery/Cultural | | Surface waters |
| | Forest | | school |
| | Government/Institutional | | summit |
| | Mixed Herbaceous and Shrub/Brush | | cemetery |
| | Outdoor Recreation | | Public Conserved Land |
| | Parking Lot/Other Developed | | Privately Conserved Land |
| | Residential | Roads | |
| | Right of Way | | Class II TH |
| | Strip Min/Quarry or Gravel Pit | | Class III TH |
| | Utilities (elec., solid waste etc.) | | Class IV TH |
| | Water | | State Forest Road |
| | Wetland | | Private Road |
| | | | Vermont State Highway |

Land Use/Land Cover for Vermont derived from Landsat Thematic Mapping Imagery (early 1990's)

DATA SOURCES:
 Vermont Center for Geographic Information (VCGI), Southern Windsor County Regional Planning Commission (SWCRPC), Vermont Agency of Natural Resources (VTANR), and Vermont Land Trust
CONSERVED LAND: Vermont Land Trust; All public and private lands with easements. 1:5,000 Last update: January, 2003.
ROADS: VCGI; VT Enhanced 911 Board. 1:5,000 orthophotos, GPS, & other. Last update: November, 2003.
SURFACE WATER: VCGI; VT Hydrography Dataset. 1:5000 orthophotos. Last update: November, 2003.
DAMS & SUMMITS: VCGI; Geographic Names USGS Data. Geographic Names Information System. Last update: February, 2003.
TOWN BOUNDARIES: VCGI. Extracted from BNDHASH. Last update: June, 2003.
VILLAGES: United States Geologic Service. USGS Quads 7.5 Minute, 1:24,000 topographic maps.

All Data and Relationships depicted in this map are intended for planning purposes only. SWCRPC and VCGI make no representation of any kind, including but not limited to the warranties of merchantability or fitness for a particular use, nor are any such warranties implied with respect to this data.

Map created March 2005

Map Printed by:
 Southern Windsor County Regional Planning Commission
 P.O. Box 320
 Ascunty Professional Bldg. Rte 5
 Ascunty, VT 05030-0320
 802-674-9201

