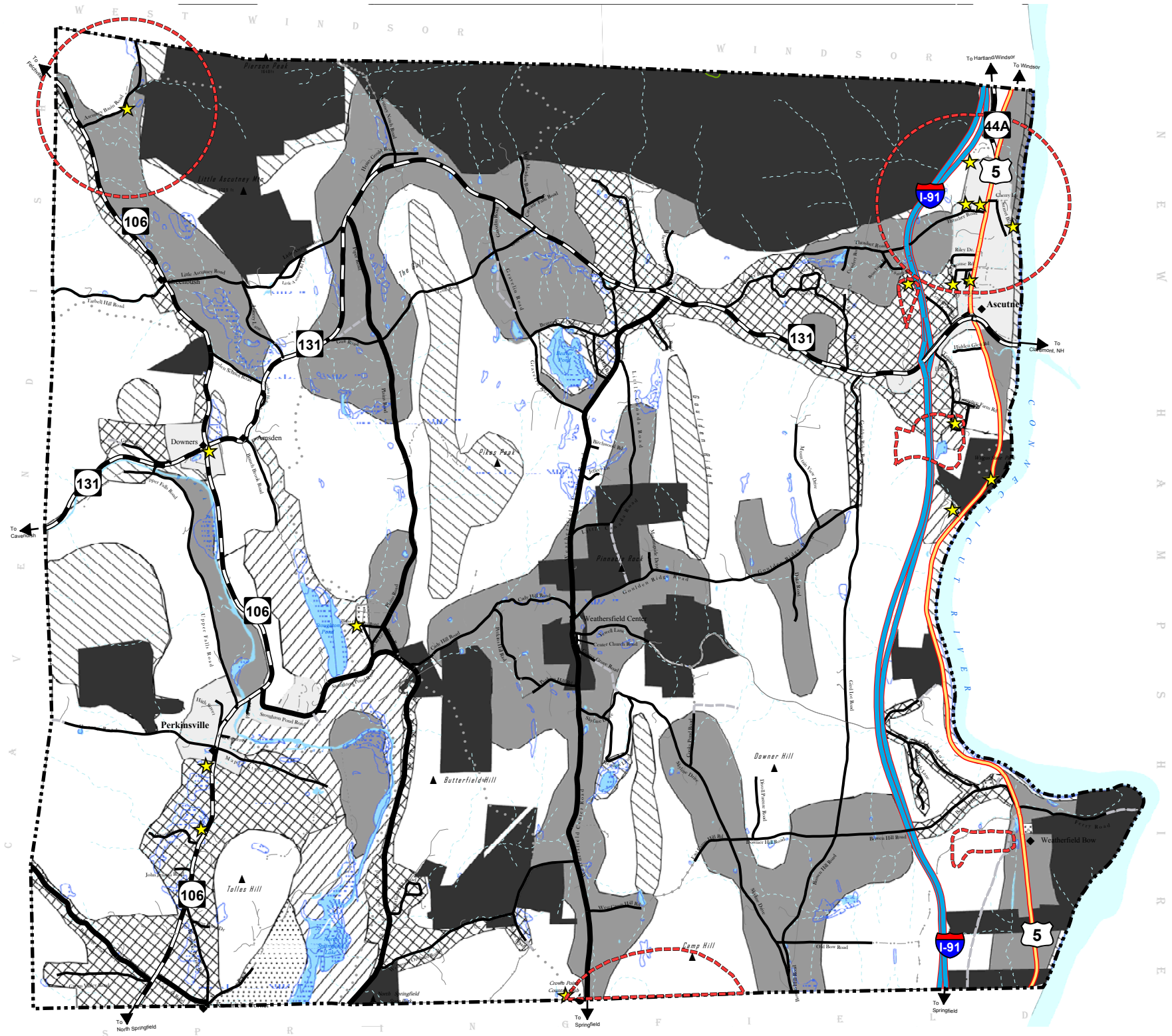


# TOWN OF WEATHERSFIELD

## Future Land Use



### Legend

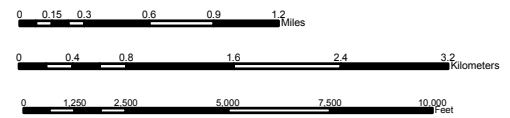
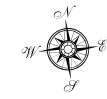
- Town Boundary
- National Wetlands Inventory (NWI)
- 3,000 foot Buffer around Public Water Wells
- Conservation Lands (Private & Public)
- Surface Water
- Actual well or surface water intake structure (Public Drinking Water Source)
- Elevation Markers and Points
- Village and Hamlets

### Roads:

- Class I TH
- Class II TH
- Class III TH
- Class IV TH
- State Forest Road
- Private Road
- Vermont State Highway
- US Highway
- Interstate
- Legal Trail
- Driveway (Private)

### Future Land Use Categories:

- Forest
- Rural Residential
- Mixed Use (Growth Center District)
- Open and Agricultural
- Institutional
- Conservation
- Recreation



Sources of Data:  
 Vermont Center for Geographic Information (VGCI);  
 Southern Windsor County Regional Planning Commission (SWCRPC);  
 Natural Resource Conservation Service (NRCS);  
 Micro Data, Incorporated (MicroData);  
 Vermont Land Trust

TOWN BOUNDARY: Converted from VGCI coverage "TBHASH" (SWCRPC), August 2002.  
 ROADS: VGCI Road Centerlines from E5000 orthophotos and GPS correction, August 2003  
 SURFACE WATERS: From E5000 orthophotos and field verification (NRCS), January 2003.

SURFACE WATERS: VGCI surface water from E5000 orthophotos  
 FUTURE LAND USE: Drawn by Weathersfield Conservation Commission, Digitized by SWCRPC  
 SOURCE PROTECTION AREAS: Public Drinking Water source as points data from ANR, Water Quality Division, 4/21/03.  
 CONSERVATION LANDS: Private and Public Lands, Source-VGCI, UVM and Vermont Land Trust &  
 Upper Valley Land Trust - Private Lands updated once a year, last update January 2003.  
 VILLAGES: United States Geologic Service. USGS Quads 7.5 Minute, E34,000 topographic maps.

All Data and Relationships depicted in this map are intended for planning purposes only  
 SWCRPC, NRCS, MicroData and VGCI make no representation of any kind, including but not limited to the warranties of  
 merchantability or fitness for a particular use, nor are any such warranties implied with respect to this data.

Map Created June 05, 2003  
 Map updated on February 9, 2004  
 Map Location: ArcGIS 8 - c:\geoinfo\sys\current\_projects\misc\_map\weathersfield\_fu3.mxd  
 Map Printed by:  
 Southern Windsor County Regional Planning Commission  
 P.O. Box 320  
 Acuteury Professional Bldg, Rte 5  
 Acuteury, VT 05030-0320  
 802-674-9201

