

Park and Ride Annual Report - December 2010

On the first Tuesday of every month Southern Windsor County Regional Planning Commission count the number of vehicles parked in the Park and Ride lots along I-91. The counts are done in the morning between 7:30 and 9:00, and in the afternoon between 3:45 and 5, at exits 7 (Springfield), 8 (Weathersfield) and 9 (Hartland/Windsor). These parking lots are part of Connecticut River Transit's (CRT) Upper Valley Commuter Routes which travel up I-91 to the White River Junction VT/ Hanover NH area. In 2010, CRT added Route 70 to its schedule which is the 12 hour shift Dartmouth-Hitchcock Medical Center route.

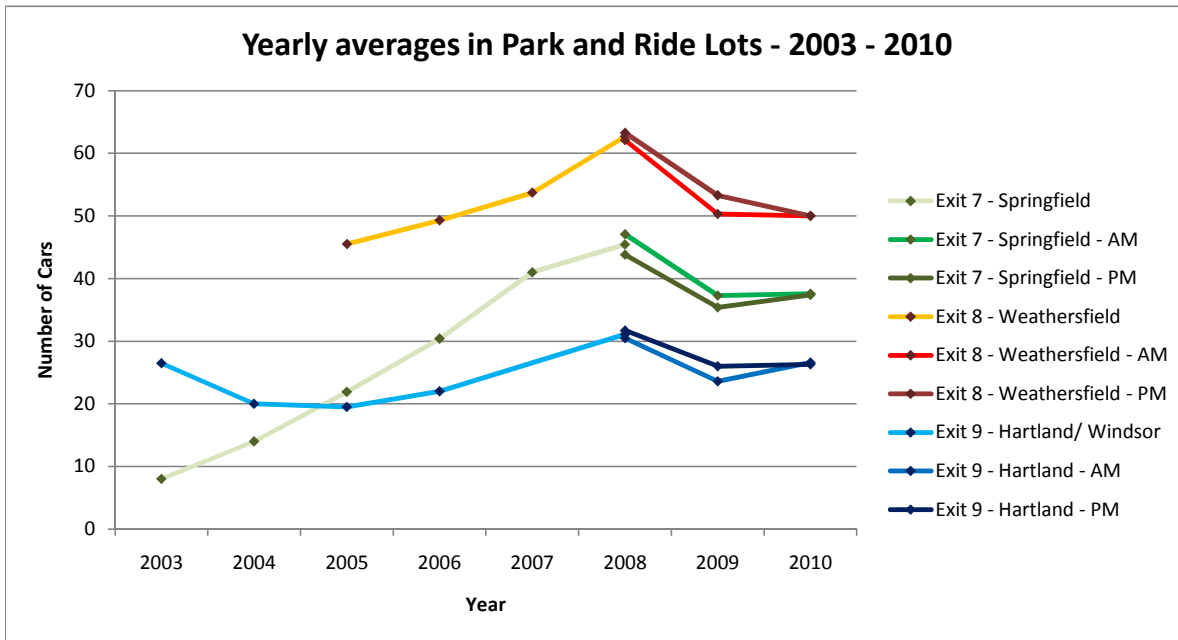
Every year between October 1 and November 1 the Vermont Agency of Transportation (VTrans) requests that all regional planning commissions across the state do counts for two days in one week. VTrans requests a total count of vehicles for mid-morning between 9:30 and 10 and mid-afternoon between 2:30 and 3 on a Tuesday and Thursday. In 2010 these counts were done in the first week of November and were carried out instead of the usual monthly park and ride count schedule.

Yearly averages in Park and Ride Lots - 2003 - 2010

	Exit 7 - Springfield			Exit 8 - Weathersfield			Exit 9 - Hartland/ Windsor			
	AM&PM	AM	PM	AM&PM	AM	PM	AM&PM	AM	PM	
2003	8		*				**	26.5		*
2004	14		*				**	20		*
2005	21.9		*	45.5			*	19.5		
2006	30.4			49.3				22		
2007	41			53.7						**
2008		47.1	43.8		62.1	63.3		30.5	31.7	
2009		37.3	35.4		50.3	53.3		23.6	26	
2010		37.6	37.4		50	50		26.6	26.3	

* Only one or two counts used for the average

** No counts



Seasonal Activity in Park and Ride Lots 2010

	Exit 7 - Springfield		Exit 8 - Weathersfield		Exit 9 - Hartland/ Windsor	
	AM	PM	AM	PM	AM	PM
January	38	39	59	54	33	35
February	34	31	67	59	27	26
March	37	36	56	55	26	27
April	37	35	49	44	31	27
May			**		**	
June			**		**	
July	43	40	53	51	23	15
August	36	39	36	39	30	23
September	31	32	46	46	26	27
October	35	35	45	48	19	29
November	41	40	***	45	47	***
December	41	45		50	60	21
Average****	37.64	37.36		50.00	50.00	26.64
Ave. percentage of Vermont Plates	63%		54%		85%	

* Only one or two counts used for the average

*** Average of two counts in one week

** No counts

**** Average calculated using two separate counts for November

