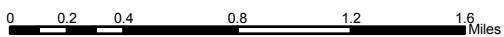
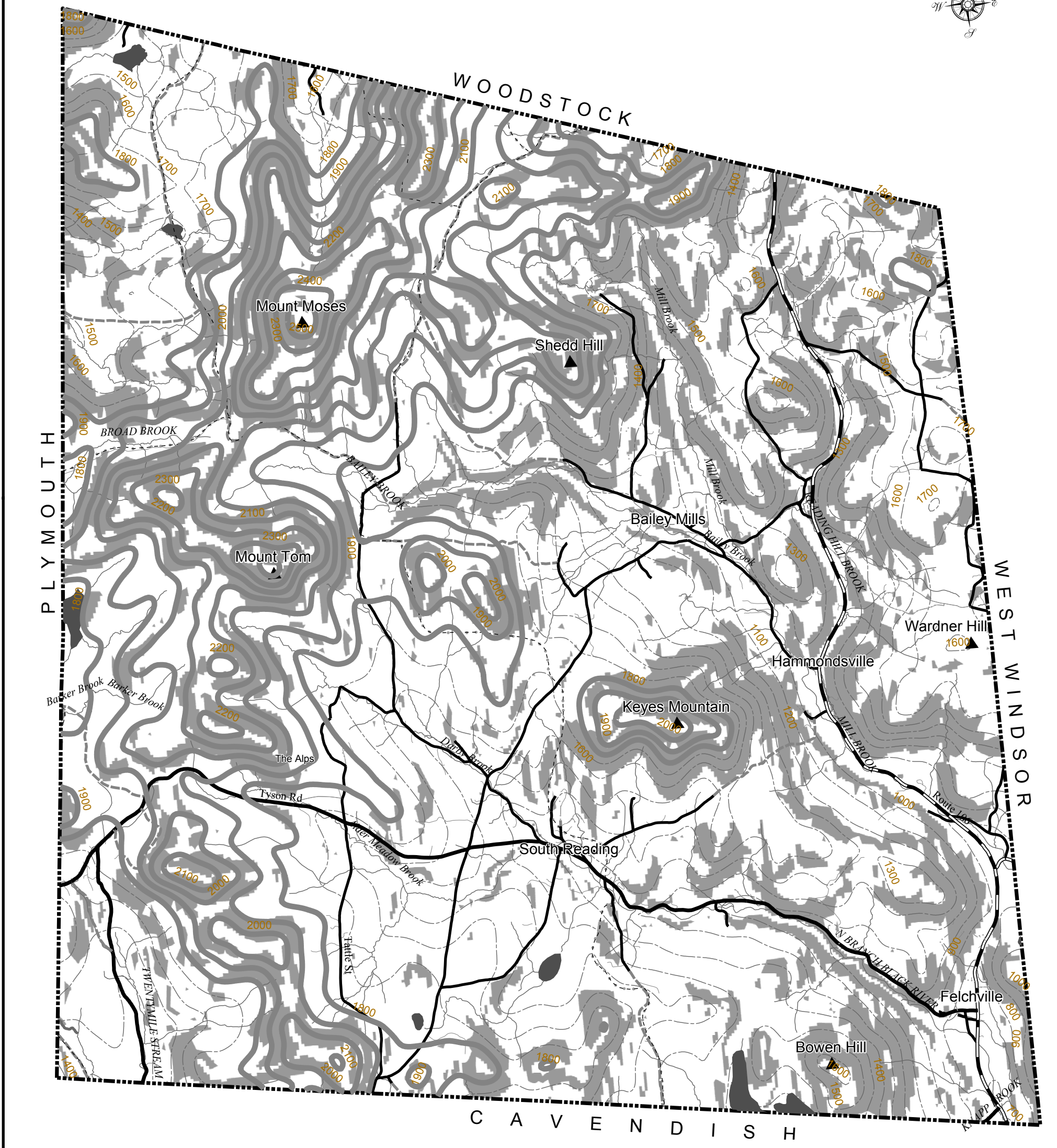
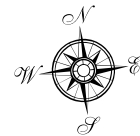


TOWN OF READING

Slopes and Elevation



Legend

- Surface Water
- Summit
- Elevation (contours) 1800 ft or greater
- Slope > 25%
- 100 Ft Contours

Roads:

- Class I TH
- Class II TH
- Class III TH
- Class IV TH
- State Forest Road
- Private Road
- Vermont State Highway
- Legal Trail
- Driveway (Private)
- Town Boundary

Sources of Data:
 Vermont Center for Geographic Information (VGCI);
 Southern Windsor County Regional Planning Commission (SWCRPC);
 Natural Resource Conservation Service (NRCS);
 University of Vermont Spatial Analysis Lab (UVM SAL)

TOWN BOUNDARY: Converted from VGCI coverage "TBHASH" (SWCRPC)
 ROADS: VGCI Road Centerlines from E5000 orthophotos and GPS correction (VGCI)
 SURFACE WATERS: From E5000 orthophotos and field verification (NRCS)
 RARE SPECIES: VT Fish and Wildlife Department - Non-game and natural heritage program (VGCI)
 WETLANDS: Vermont Significant Wetlands Index (VGCI). This data include both NWI and VANR Class II wetlands. Three (3) acres minimum mapping unit includes a 50' buffer. VANR updated as of 1996.
 BEAR HABITAT: Production habitats are areas supporting high densities of cub producing females and are generally contiguous and remote forestlands. Seasonal habitats are regions frequently used by, including cub producing females. These habitats often contain critical seasonal feeding areas and vital travel corridors. Crossing corridors are areas along highways where bears have been known to cross regularly.
 DEER WINTERING AREAS: Sources included state highways maps and topographic maps, overlays to 1977 infrared photos, written material and verbal information from DFW biologists. Compiled by E:24000 & E:25000. VANR-DW, 1994.
 SLOPES & CONTOURS: Derived from E:24000 Digital Elevation Model DEM (SWCRPC)

All Data and Relationships depicted in this map are intended for planning purposes only. SWCRPC, NRCS and VGCI make no representation of any kind, including but not limited to the warranties of merchantability or fitness for a particular use, nor are any such warranties implied with respect to this data.

Map Edited March 2005
 Map Location: ArcGIS 8 - C:\geoinfosys\current_projects\misc_maps\reading_slopesmbw.mxd
 Map Printed by:
 Southern Windsor County Regional Planning Commission
 P.O. Box 320
 Ascotney Professional Bldg. Rte 5
 Ascotney, VT 05030-0320
 802-674-9201

