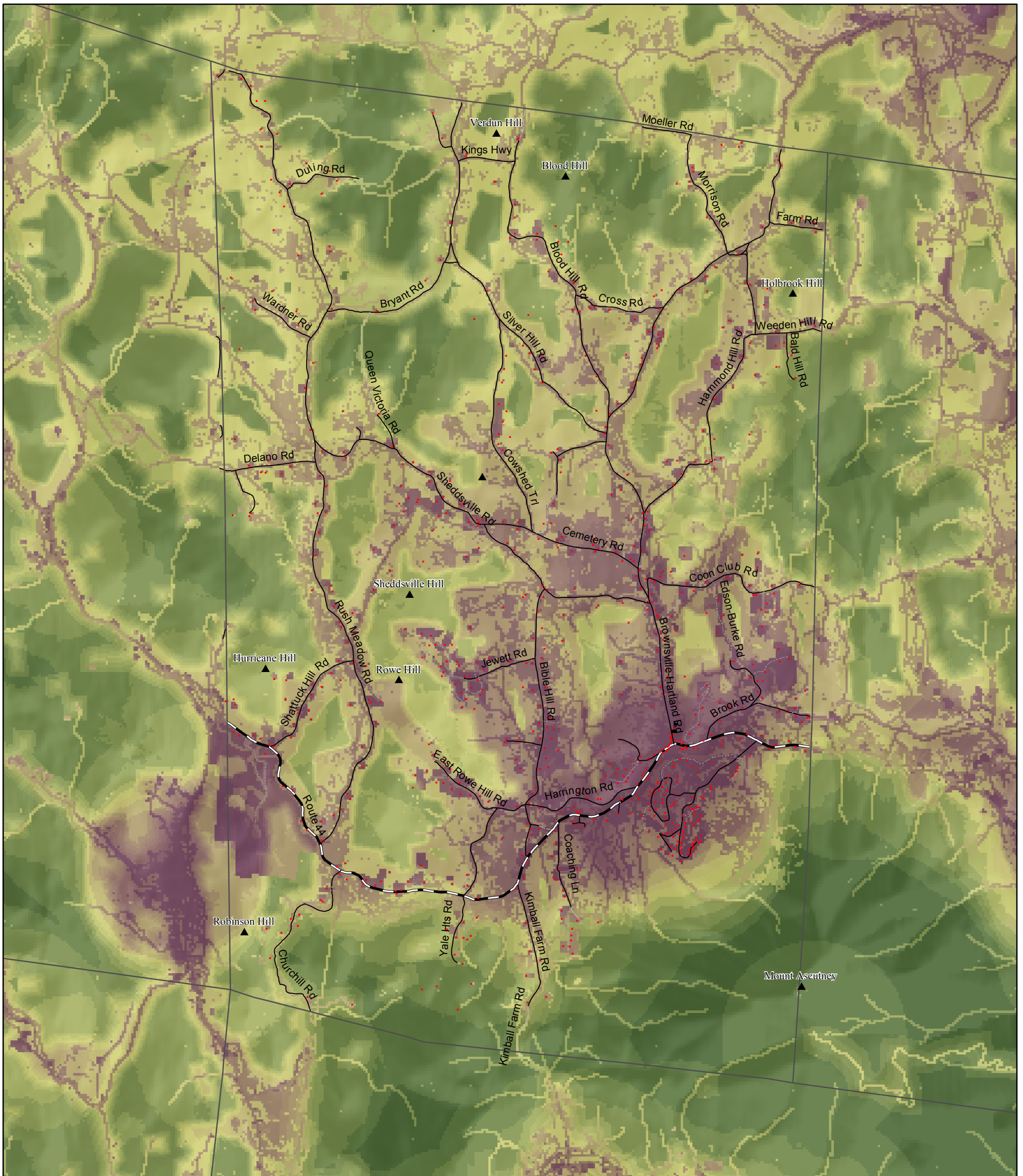


Town of West Windsor, Vermont

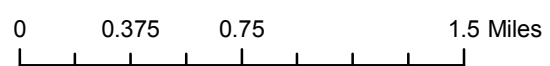
MAP 7 - Wildlife Habitat Suitability

2010 Town Plan - Effective Date: August 9, 2010




High : 10
 Low : 0.6

Wildlife Suitability Analysis is a predictive model based on 1) population density 2) Land Use/Land Cover and 3) core forest blocks. Darker greens indicate areas that have a greater probability of being good habitat for wildlife. It does not show actual habitat quality. VT Fish & Wildlife and VTrans, 2006.



VT State Plane, Meters, NAD 83

For planning purposes only. Not for regulatory interpretation.



for info & data - www.vcgi.org

Southern Windsor County Regional Planning Commission



SWCRPC
PO BOX 320
Ascutney, VT 05030
802.674.9201
www.swerpc.org

