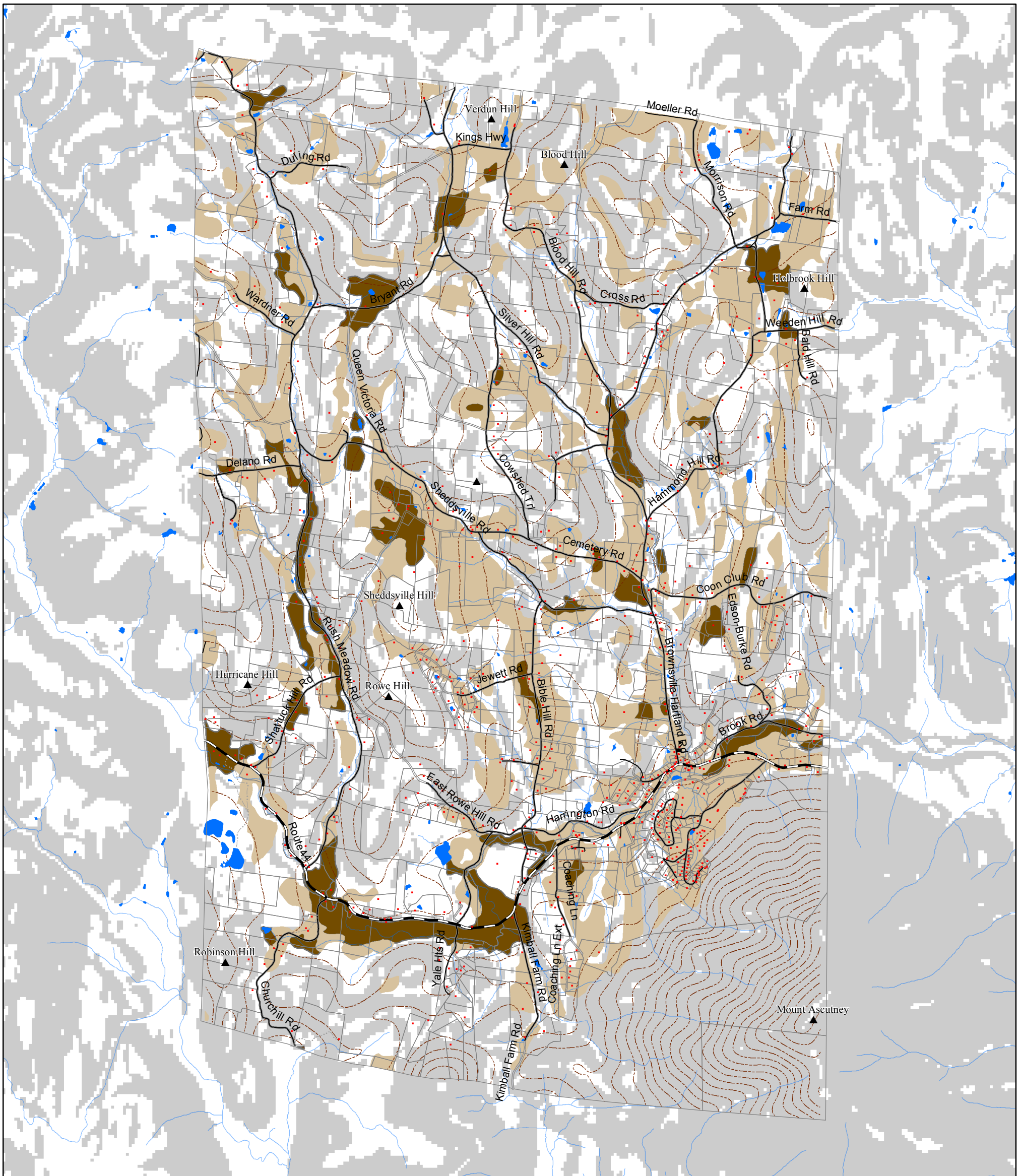


# Town of West Windsor, Vermont

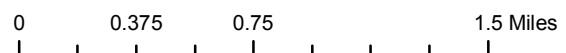
## MAP 5 - Slope and Soils

2010 Town Plan - Effective Date: August 9, 2010



	> 20% Slope
	100ft contours
	primary agricultural soils
	statewide significant soils

Soils Data: The Natural Resource Conservation Service (NRCS), USDA, 2006. The soils shown on this map have been given an important farmland rating of "prime" or "statewide" by the USDA Soil Conservation Service (now the NRCS). Such soils may qualify as "Primary Agricultural Soils" as defined by Vermont's Land Use and Development Law, Act 250.



VT State Plane,  
Meters, NAD 83

For planning purposes only.  
Not for regulatory interpretation.

for info & data - [www.vcgi.org](http://www.vcgi.org)

Southern Windsor County  
Regional Planning Commission

SWCRPC  
PO BOX 320  
Ascutney, VT 05030  
802.674.9201  
[www.swcrpc.org](http://www.swcrpc.org)