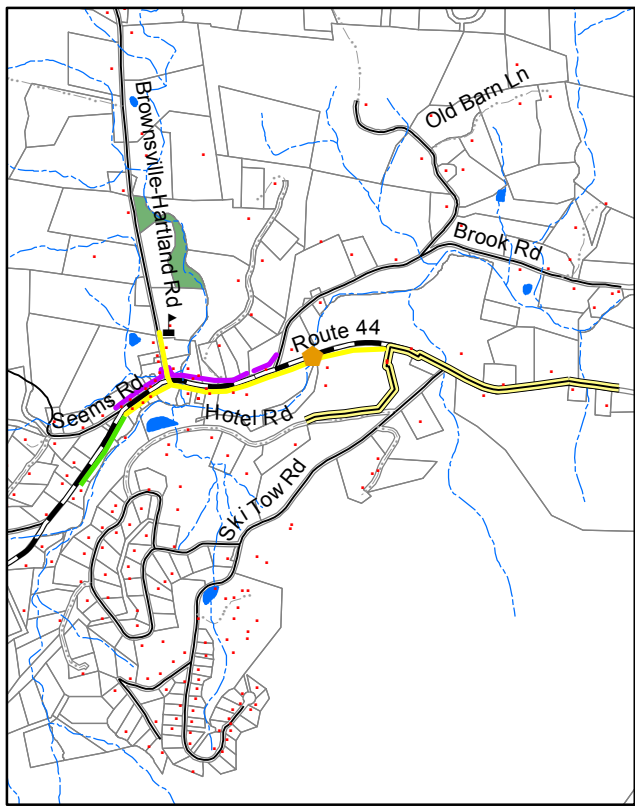
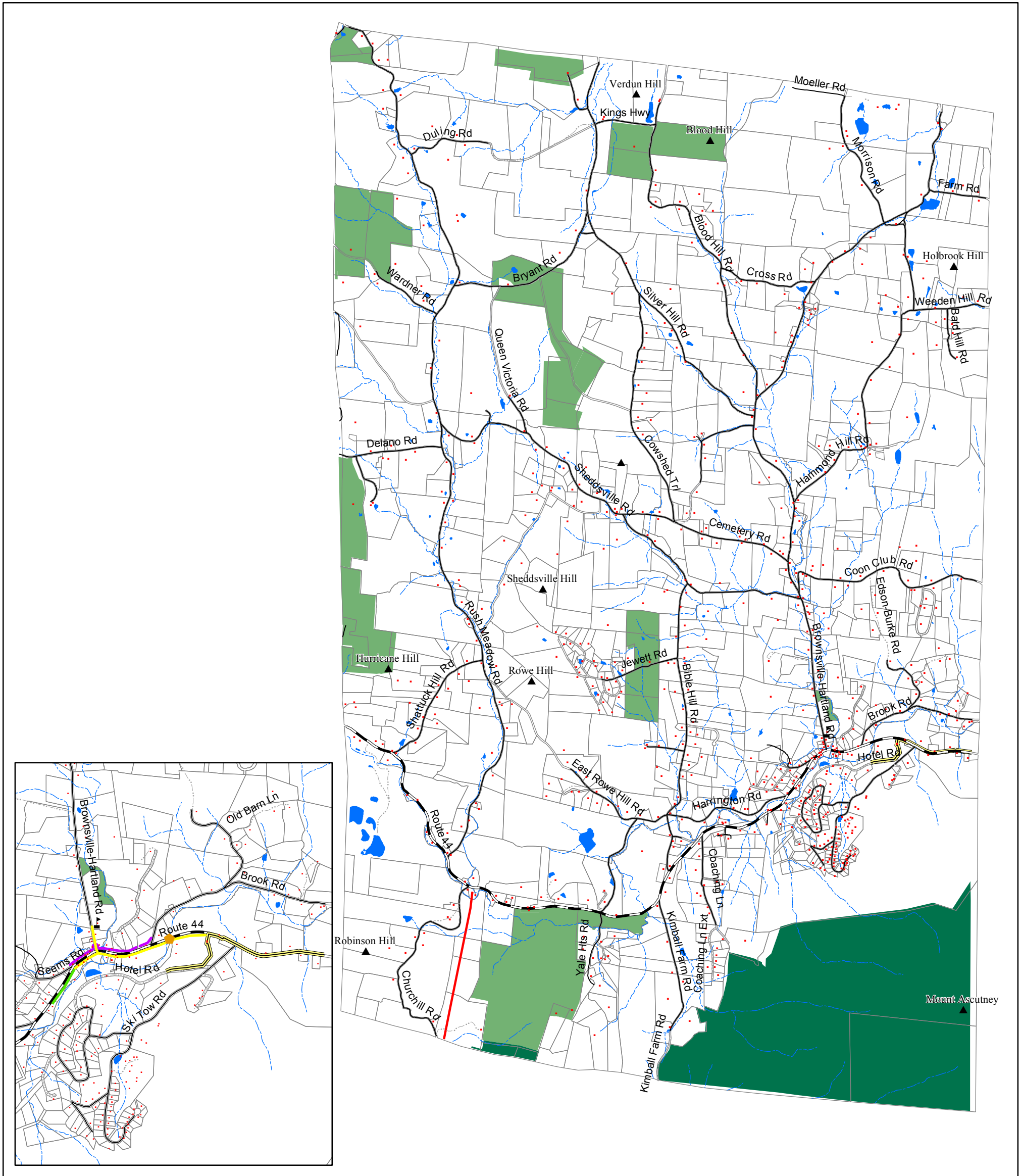


Town of West Windsor, Vermont

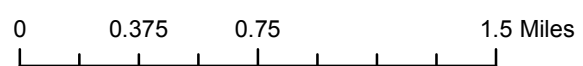
MAP 3 - Base Features

2010 Town Plan - Effective Date: August 9, 2010



■ structures		proposed new facilities
— sewer line	◆ bridge replacement	— sewer line extension
— electric transmission line	— sidewalk extension	
— roads		
□ parcels 2007		
— sidewalk		
conserved lands		
■ publicly owned and/or conserved		
■ privately conserved		

Sources: Structures - E911 Project, MicroDATA GPS data, 1996-2002.
 Conserved Lands: UVM Spatial Analyst Lab, 2002.



VT State Plane,
Meters, NAD 83

For planning purposes only.
Not for regulatory interpretation.

for info & data - www.vcgi.org

Southern Windsor County
Regional Planning Commission

SWCRPC
PO BOX 320
Ascutney, VT 05030
802.674.9201
www.swcrpc.org