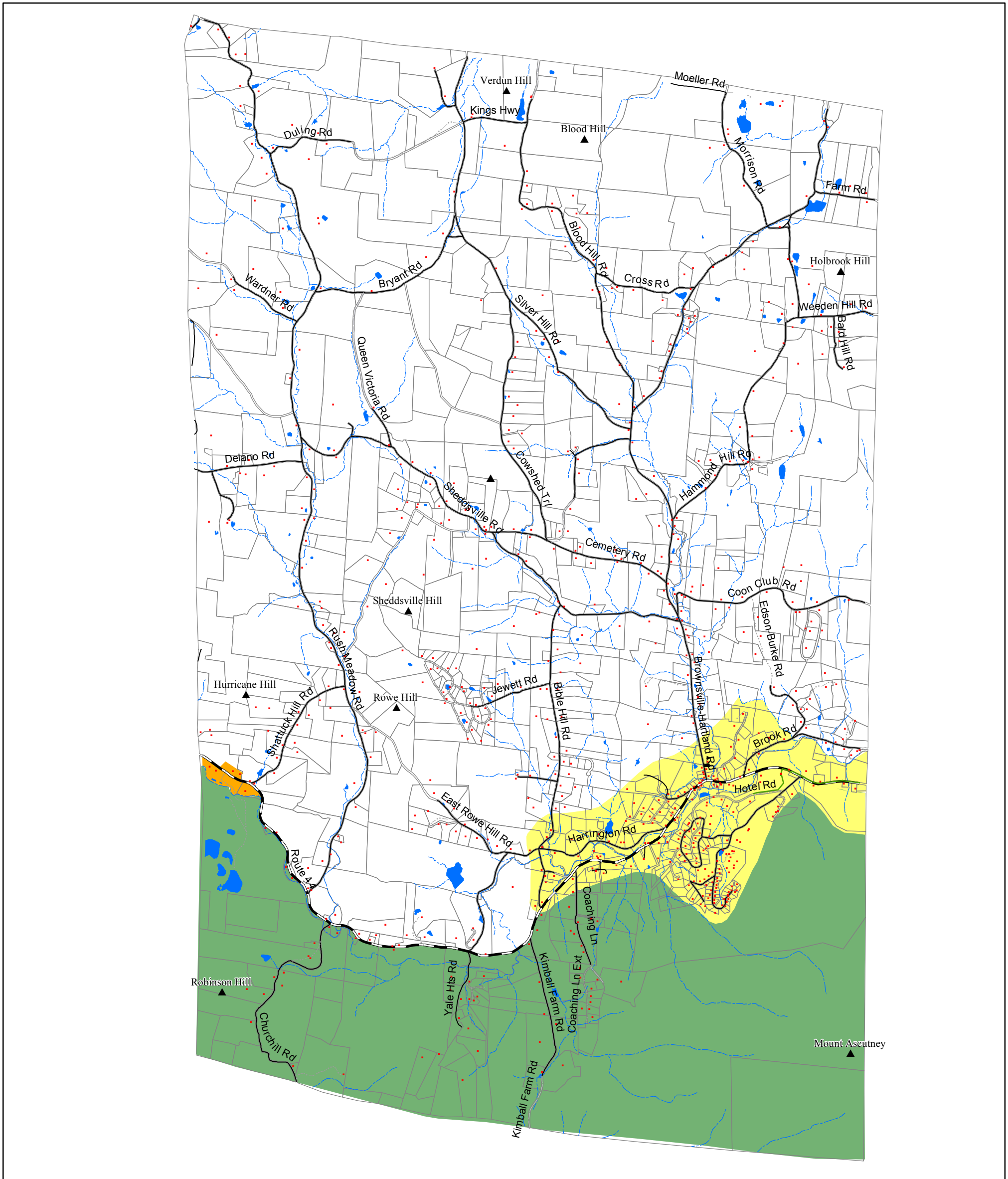


Town of West Windsor, Vermont

MAP 2 - Future Land Use

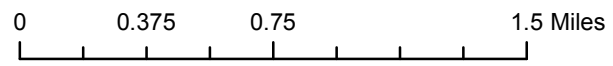
2010 Town Plan - Effective Date: August 9, 2010



Land Use Categories


	resort
	resort/conservation
	secondary growth area/residential
	primary growth area/village
	rural residential
	commercial/light industrial
	conservation area
	affordable-moderate housing overlay

Future Land Use Categories and boundaries created by West Windsor Planning Commission Spring 2010



VT State Plane, Meters, NAD 83

For planning purposes only. Not for regulatory interpretation.



for info & data - www.vcgi.org

Southern Windsor County Regional Planning Commission



SWCRPC
PO BOX 320
Ascutney, VT 05030
802.674.9201
www.swcrpc.org