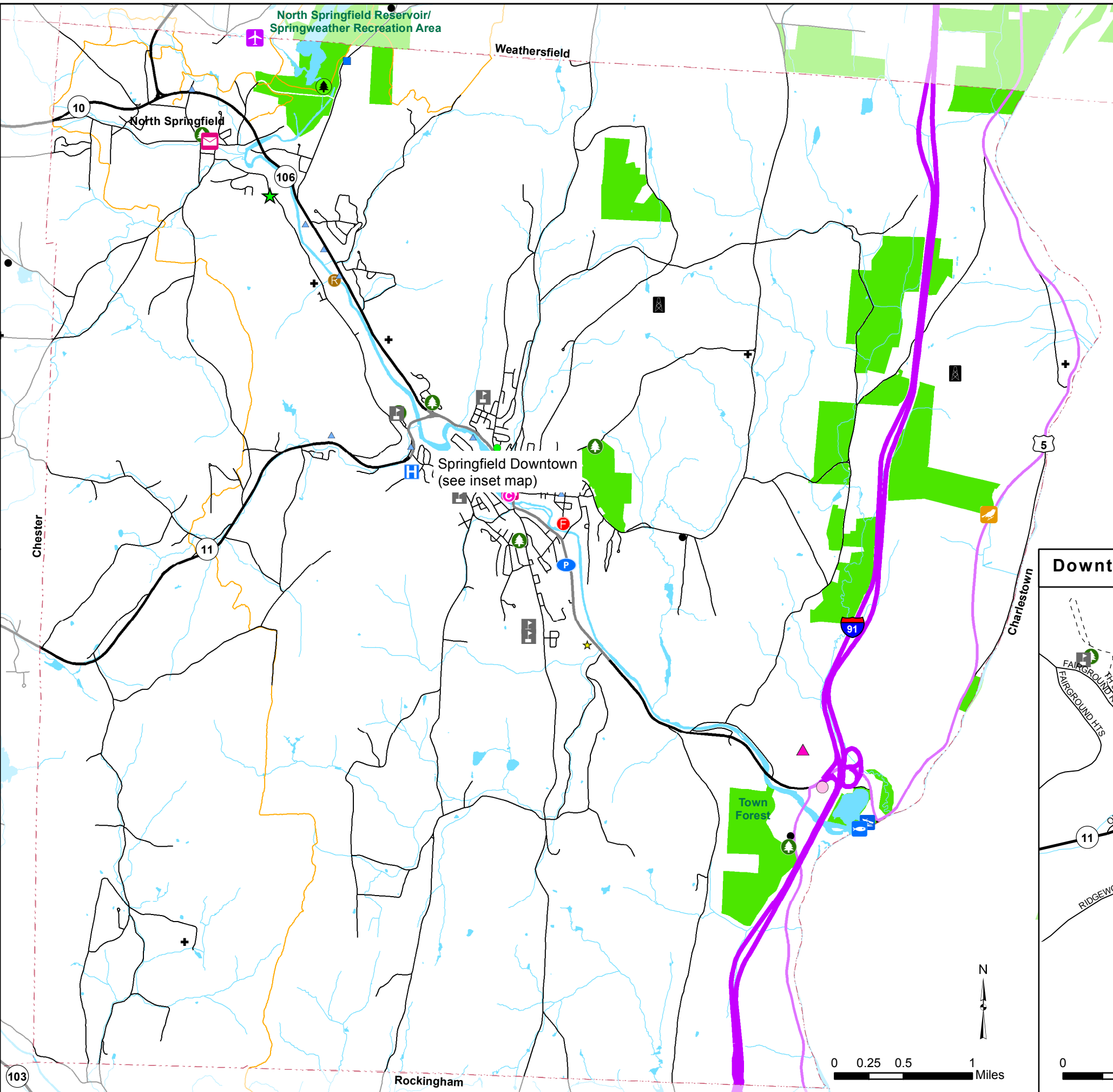


Facilities and Utilities Map (Part 1) Town Plan 2017 (Adopted: 08/14/2017) Town of Springfield, Vermont



- ★ Town Hall
- 🚒 Fire and Ambulance Station
- 🚓 Police Station
- 🏛️ Other government
- H Hospital
- 🏥 Other healthcare facility
- 🏠 Correctional Facility
- 📖 Library
- 📧 Post Office
- ★ Public Works Dept
- ★ Wastewater Treatment Facility
- 🚐 VTrans District Hwy Garage
- ♻️ Recycling Center
- 🎓 School
- 🏡 Community Center
- Other civic/ public
- 🌲 US Army Corp/ Recreation Area
- 🌳 Town Park/Forest/Recreation Area
- 🌊 Lake or River Access
- 🎣 Fishing Access
- 🦅 Wildlife Management Area (WMA)
- Other notable recreation site
- ⛔ Cemetery
- 📡 Telecommunications Tower
- ✈️ Airport
- 🟩 Private or Public Conserved Lands
- 🛣️ Interstate Highway
- 🛣️ US Highway
- 🛣️ VT State Highway
- 🛣️ Class 1 Town Highway
- 🛣️ Class 2 & 3 Town Highway
- 🛣️ VAST Recreation Trails
- 🌊 Rivers and Streams
- 🟦 Lakes and Ponds
- 🔲 Town Boundary

Data Sources:
Buildings (VT E911 April 2013 and Southern Windsor County Regional Planning Commission (SWCRPC) 2015), Recreation sites (VT Agency of Natural Resources (ANR) 1999 and SWCRPC 2014), Cemeteries (VT Agency of Transportation (VTrans) 2001), Telecommunications Tower (Natural Resources Board 2007 and SWCRPC 2013), Airport (VTrans 2014), Conserved Lands (ANR 2012, Upper Valley Land Trust 2013, University of Vermont 2010), Waterbodies (VT Hydrographic Dataset 2008), VAST Recreational Trail network (VT E911 2013), Road centerline (VTrans 2014), Town Boundary (SWCRPC 2013 using Parcels 2013)

VT State Plane, Meters, NAD 83
Data depicted on this map are for planning purposes only and are based on best available information. Some of the data do not line up.

SWCRPC
SOUTHERN WINDSOR COUNTY
REGIONAL PLANNING COMMISSION

P.O. Box 320, Ascutney, VT 05030
802-674-9201 www.swcrpc.org

For planning purposes only
Not for regulatory interpretation
Drawn December 18, 2015

