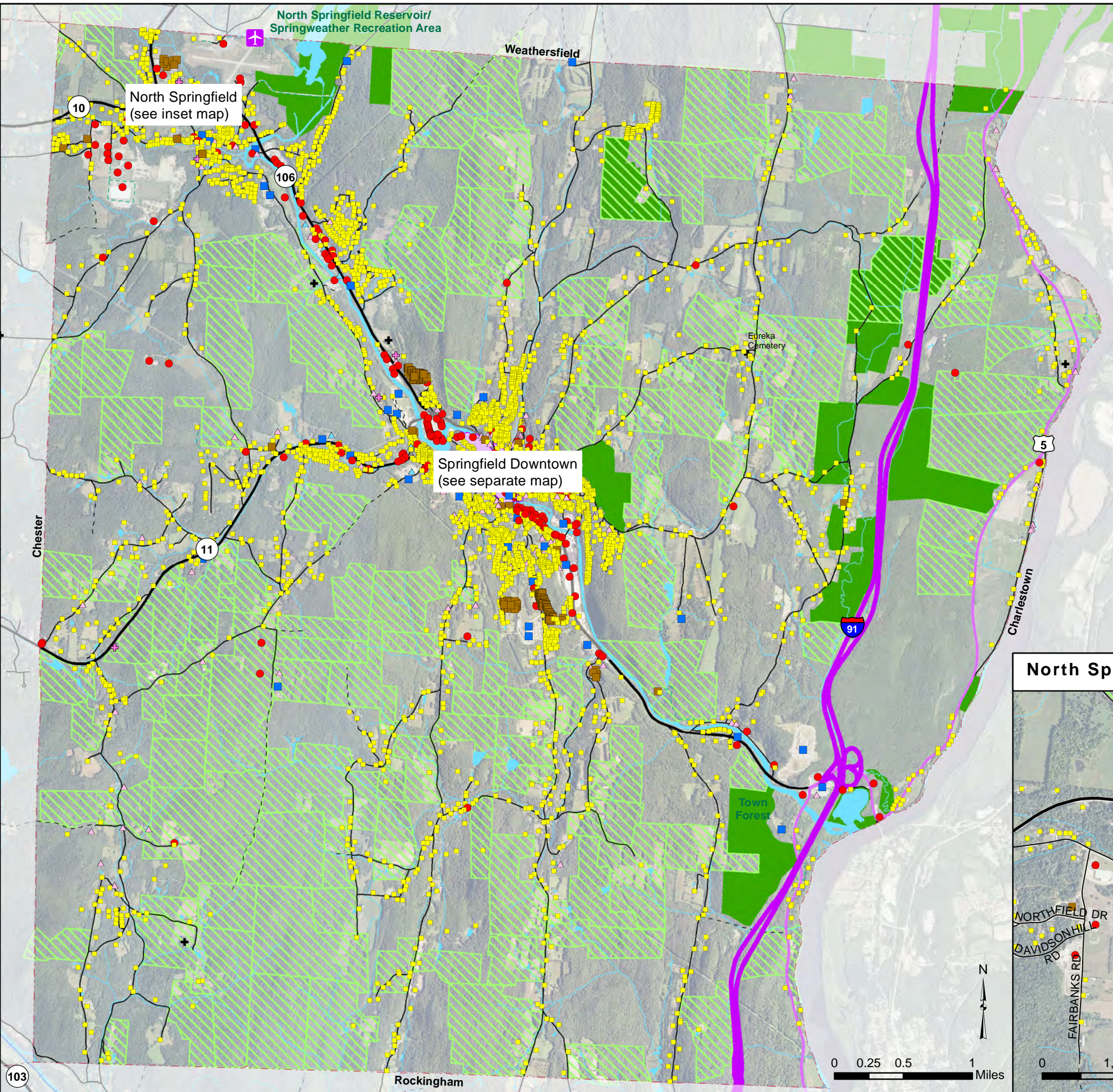


# Current Land Use Map (Townwide) Town Plan 2017 (Adopted: 08/14/2017) Town of Springfield, Vermont



- Civic/ Public
- Commercial and Lodging
- Mixed Use
- Industrial
- ▲ Health Care
- + Church
- Major Residential
- Residential
- ▲ Other
- + Cemetery
- ✈ Airport
- ~ Interstate Highway
- ~ US Highway
- ~ VT State Highway
- ~ Class 1 Town Highway
- ~ Class 2 & 3 Town Highway
- ~ Class 4 Town Hwy & Legal Trail
- ~ Private Road
- + Railroads
- ~ Rivers and Streams
- Lakes and Ponds
- Current Use (UVA) Lands
- Private or Public Conserved Lands
- Downtown District Designation
- Town Boundary

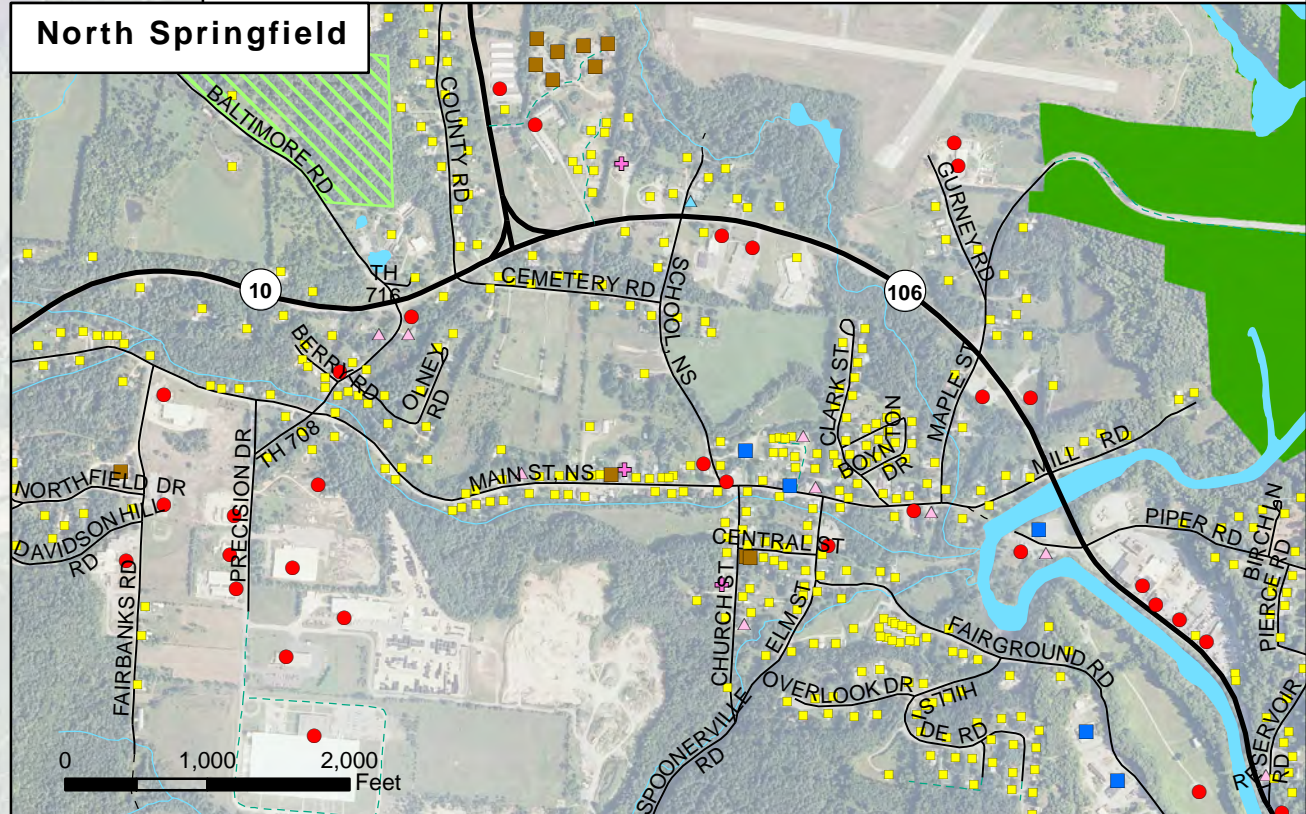
Data Sources:  
Buildings (VT E911 April 2013, 2013 Grand list from VT Dept of Taxes, and Town 2015), Cemeteries (VT Agency of Transportation 2001), Railroads (VT Agency of Transportation 2014), Conserved Lands (VT Agency of Natural Resources 2012, Upper Valley Land Trust 2013, University of Vermont 2010), Current Use Lands (Use Value Assessment (UVA), Windsor County Forester 2012), Waterbodies (VT Hydrographic Dataset 2008), Road centerline (VT Agency of Transportation 2014), Airport (VT Agency of Transportation 2014), Downtown District (Southern Windsor County Regional Planning Commission 2010), Town Boundary (Southern Windsor County Regional Planning Commission 2013 using Parcels 2013), Aerial (National Agricultural Imagery Program 2009).

VT State Plane, Meters, NAD 83  
Data depicted on this map are for  
planning purposes only and are  
based on best available information.  
Some of the data do not line up.



P.O. Box 320, Ascutney, VT 05030  
802-674-9201 www.swcrpc.org

For planning purposes only  
Not for regulatory interpretation  
Drawn December 18, 2015



0 0.25 0.5 1 Miles

0 1,000 2,000 Feet

103