

# Southern Windsor County Park and Ride Annual Report



December 2017

On the first Tuesday of every month (where possible) Southern Windsor County Regional Planning Commission counts the number of vehicles parked in the Park and Ride lots along I-91. The counts are done in the morning between 9am and 11am at exits 7 (Springfield), 8 (Weathersfield/ Ascutney) and 9 (Hartland/Windsor). These parking lots are part of Southeast Vermont Transit's (SEVT, formerly Connecticut River Transit) Upper Valley Commuter Routes which travel up I-91 to the White River Junction VT/ Hanover NH area.

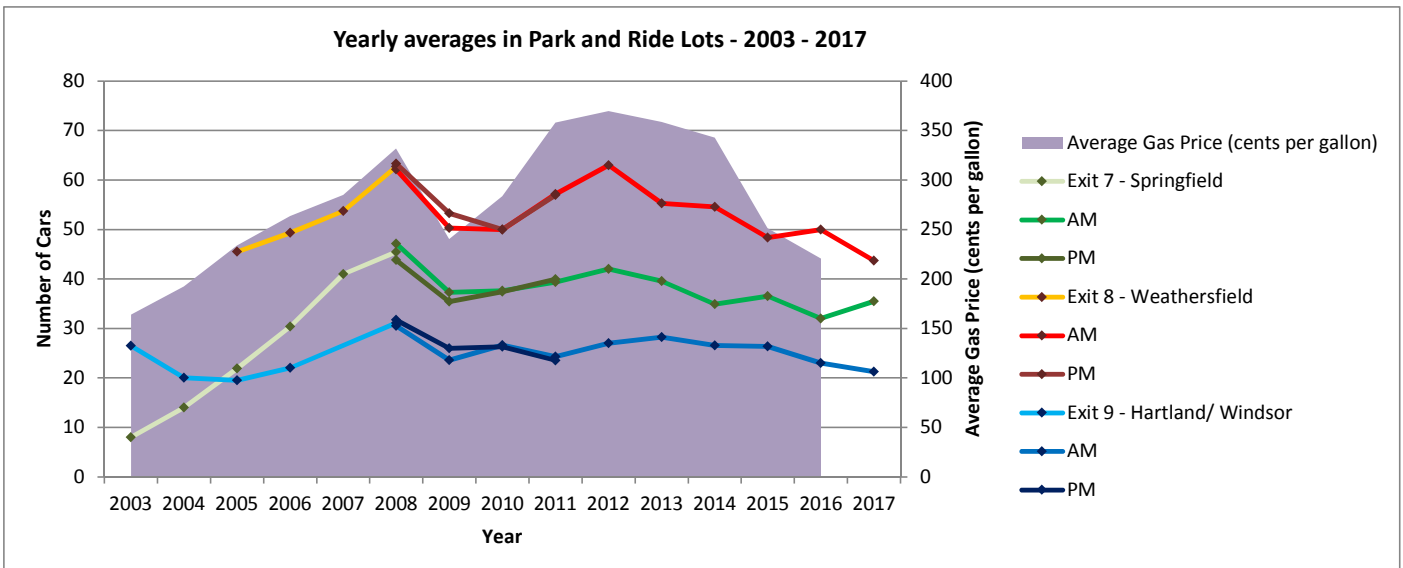
Every year the Vermont Agency of Transportation (VTrans) requests that all regional planning commissions across the state do counts on particular months at particular times.

The region also includes two municipal park and ride lots - on VT-103 in Ludlow next to the fire station, and on VT-106 in Weathersfield just north of VT-131/ Downers. Counts are done on these lots periodically and are available upon request.

## Yearly Activity in Park and Ride Lots

	Exit 7 - Springfield			Exit 8 - Weathersfield			Exit 9 - Hartland/ Windsor			Average Gas Price (cents per gallon)		
	AM&PM	AM	PM	AM&PM	AM	PM	AM&PM	AM	PM			
2003	8			<sup>1</sup>			<sup>2</sup>	27			<sup>1</sup>	163.8
2004	14			<sup>1</sup>			<sup>2</sup>	20			<sup>1</sup>	192.3
2005	22			<sup>1</sup>	46		<sup>1</sup>	20				233.8
2006	30				49			22				263.5
2007	41				54						<sup>2</sup>	284.9
2008		47	44			62	63			31	32	331.7
2009		37	35			50	53			24	26	240.1
2010		38	37			50	50			27	26	283.6
2011		39	40			57	57			24	24	357.7
2012		42				63				27		369.5
2013		40				55				28		358.4
2014		35				55				27	<sup>3</sup>	342.5
2015		37				48				26	<sup>4</sup>	251.0
2016		32				50				23		220.4
2017		36				44				21		Not yet available

<sup>1</sup> Only one or two counts used for the average  
<sup>2</sup> No counts  
<sup>3</sup> Hartland P&R was closed from May to September for  
<sup>4</sup> Springfield P&R was closed from May to August for upgrade.  
 Average Yearly Gas Price from the Energy Information Administration ("Motor Gasoline Retail Prices, US City Average"). Downloaded December 4, 2017.  
[http://www.eia.gov/totalenergy/data/monthly/pdf/sec9\\_6.pdf](http://www.eia.gov/totalenergy/data/monthly/pdf/sec9_6.pdf)



## Monthly Activity in Park and Ride Lots

	Exit 7 - Springfield			Exit 8 - Weathersfield			Exit 9 - Hartland/ Windsor			Average Gas Price (cents per gallon)
	2016	2017	% capacity <sup>3</sup>	2016	2017	% capacity <sup>3</sup>	2016	2017	% capacity <sup>3</sup>	
January	34	36	34%	46	40	62%	18	21	38%	248
February	25	35	33%	59	45	69%	25	16	29%	240.2
March	31	34	32%	50	50	77%	19	18	33%	236.8
April	32	33	31%	46	52	80%	24	22	40%	239.4
May	31	38	36%	61	44	68%	26	16	29%	250.1
June	35	35	33%	44	55	85%	28	29	53%	250
July	30	34	32%	54	40	62%	20	31	56%	239.7
August	40	26	25%	46	38	58%	23	14	25%	246
September	33	47	44%	46	41	63%	25	23	42%	286.1
October	29	29	27%	51	39	60%	27	27	49%	268.9
November	32	44	42%	48	40	62%	21	20	36%	267.4
December	37	35	33%	54	40	62%	24	18	33%	268.5
Average	32	36	33%	50	44	67%	23	21	39%	Not yet available
Ave. percentage of Vermont Plates	75%	67%		47%	47%		87%	87%		

New England Weekly Gas Price from the Energy Information Administration ("All Grades All Formulations Retail Gasoline Prices") Released 12/12/2017.  
<http://www.eia.gov/petroleum/gasdiesel/xls/pswrgvwall.xls> "Data 12" tab

<sup>3</sup>Percentage of lot capacity is calculated using the official capacity of the lot. Before their upgrades, Springfield (summer 2015) and Hartland (summer 2014) had additional unpaved area for parking.

