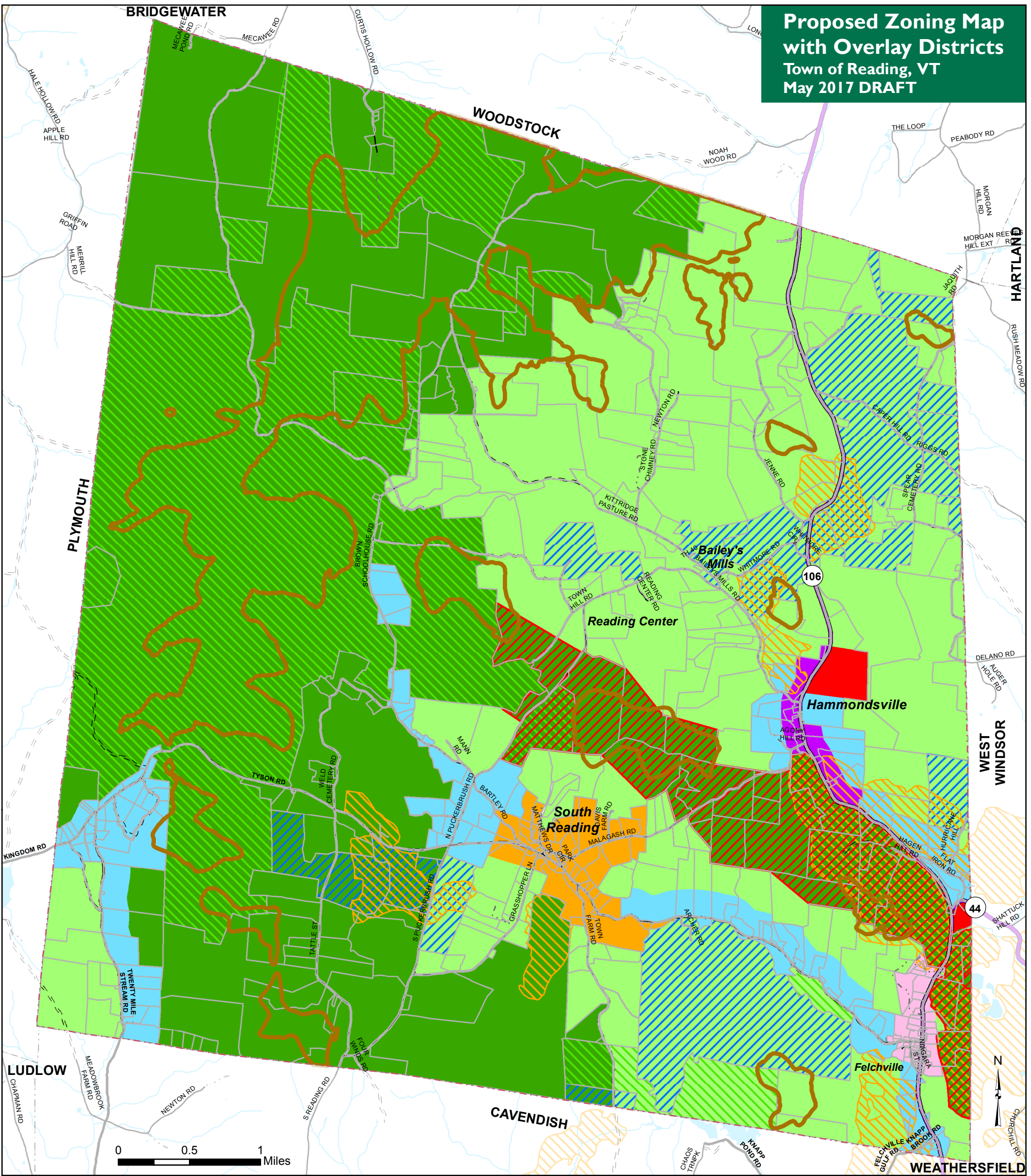


Proposed Zoning Map with Overlay Districts
Town of Reading, VT
May 2017 DRAFT



Proposed Zoning Districts (last changed May 2017)

- Rural/ Conservation (RC-25)
- Rural Residential (RR-10)
- Rural Residential (RR-5)
- Residential/ Commercial (Hammondsville) (RC-A)
- Rural Residential (South Reading) (R-1)
- Residential/ Commercial (Felchville) (RC-B)
- Industrial/ Mining (IND)

- Conserved Public Lands (from 2015 Town Plan Maps)
- Conserved Private Land (from 2015 Town Plan Maps)
- Proposed Deer Wintering Area (ANR 2011, as used in 2015 Town Plan Maps)
- Proposed Wildlife Travel Corridor (May 2017 draft)
- Proposed Ridgeline Overlay (March 2016 draft)

- VT State Highway
- Class 2 Town Highway
- Class 3 Town Highway
- Class 4 Town Highway
- Legal Trail (Reading only)
- Private Road (Reading only)

- River or Stream
- Lake or Pond
- Parcels (TerraMap 2016)
- Town Boundary

VT State Plane, Meters, NAD 83
 Data depicted on this map are for planning purposes only and are based on best available information. Some of the data do not line up.

Data Sources:
 Zoning (DRAFT) (RPC May 2017),
 Ridgeline Protection Overlay District (DRAFT) (RPC February 2015),
 Proposed Wildlife Overlay District (DRAFT) (RPC May 2017),
 Conserved Public and Private Lands (UVM 2010, ANR 2012 and Town 2012),
 Deer Wintering (ANR 2011),
 Waterbodies (VHD 2008),
 Road centerline (VTrans 2015),
 Parcels (TerraMap 2016),
 Town Boundaries (RPC 2011 and VCGI 2012).



Proposed Wildlife Overlay District is a combination of the Deer Wintering Area and the Wildlife Travel Corridor.

For planning purposes only
 Not for regulatory interpretation
 Map last revised: May 4, 2017