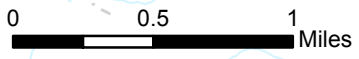
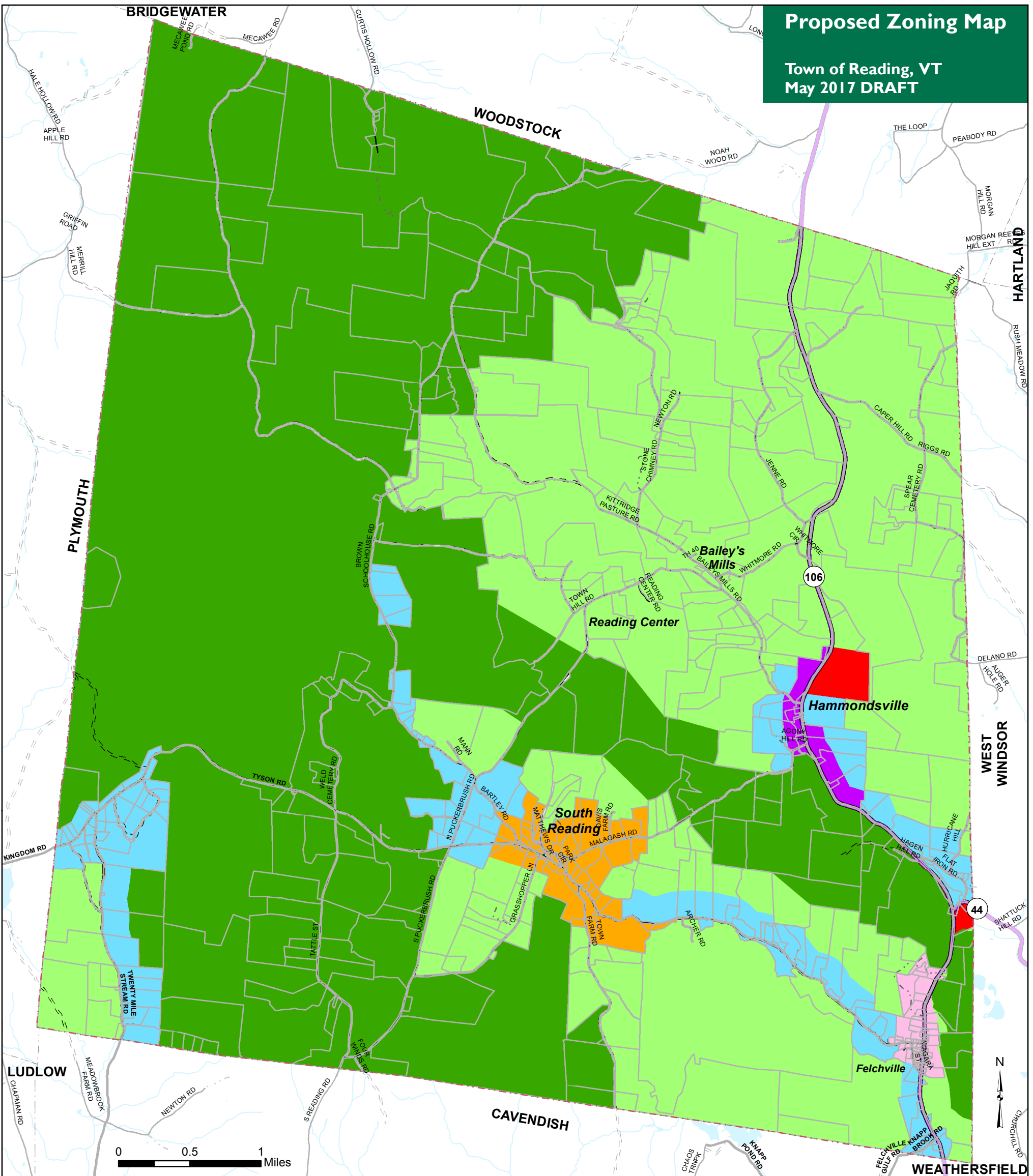


# Proposed Zoning Map

Town of Reading, VT  
May 2017 DRAFT



VT State Plane, Meters, NAD 83  
Data depicted on this map are for planning purposes only and are based on best available information. Some of the data do not line up.

## Proposed Zoning Districts (last changed May 2017)

- Rural/ Conservation (RC-25)
- Rural Residential (RR-10)
- Residential/ Commercial (RR-5)
- Residential/ Commercial (Hammondsville) (RC-A)
- Rural Residential (South Reading) (R-1)
- Residential/ Commercial (Felchville) (RC-B)
- Industrial/ Mining (IND)
- VT State Highway
- Class 2 Town Highway
- Class 3 Town Highway
- Class 4 Town Highway
- Legal Trail (Reading only)
- Private Road (Reading only)
- River or Stream
- Lake or Pond
- Parcels (TerraMap 2016)
- Town Boundary

Data Sources:  
Zoning (DRAFT) (RPC May 2017),  
Waterbodies (VHD 2008), Road  
centerline (VTrans 2015), Parcels  
(TerraMap 2016), Town Boundaries  
(RPC 2011 and VCGI 2012).



For planning purposes only  
Not for regulatory interpretation  
Map last revised: May 4, 2017