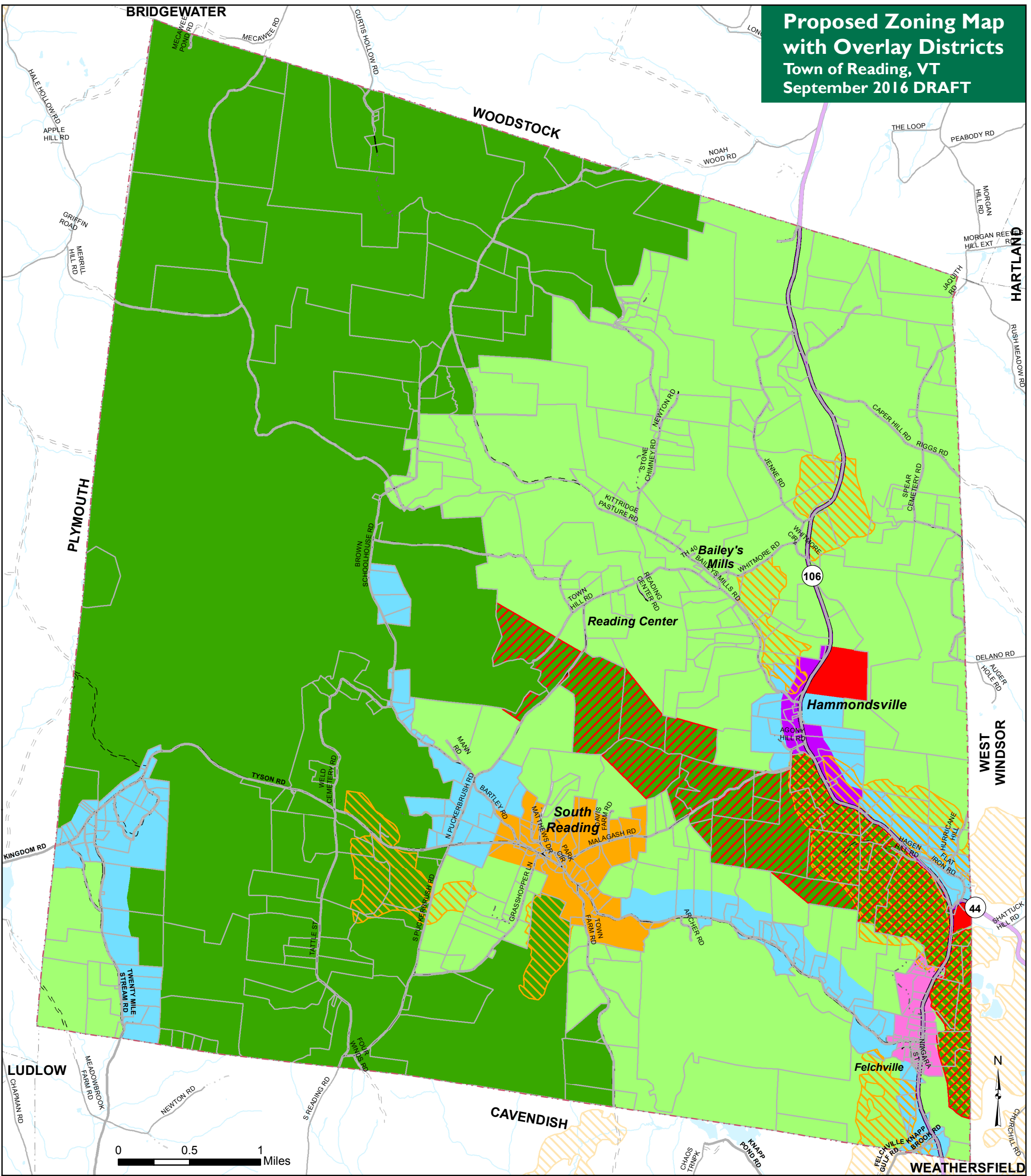


**Proposed Zoning Map
with Overlay Districts
Town of Reading, VT
September 2016 DRAFT**



0 0.5 1 Miles

Proposed Zoning Districts (last changed September 2016)

- Rural/ Conservation (RC-25)
- Rural Residential (RR-10)
- Rural Residential (RR-5)
- Residential/ Commercial (Hammondsville) (RC-A)
- Rural Residential (South Reading) (R-1)
- Residential/ Commercial (Felchville) (RC-B)
- Industrial/ Mining (IND)

Proposed Significant Wildlife Habitat Overlay District

- Proposed Wildlife Travel Corridor (August 2016 draft)
- Proposed Deer Wintering Area (ANR 2011)

- VT State Highway
- Class 2 Town Highway
- Class 3 Town Highway
- Class 4 Town Highway
- Legal Trail (Reading only)
- Private Road (Reading only)

- River or Stream
- Lake or Pond
- Parcels (TerraMap 2016)
- Town Boundary

Proposed Wildlife Overlay District is a combination of the Deer Wintering Area and the Wildlife Travel Corridor.

VT State Plane, Meters, NAD 83
Data depicted on this map are for planning purposes only and are based on best available information. Some of the data do not line up.

Data Sources:
Zoning (DRAFT) (RPC Sept 2016),
Ridgeline Protection Overlay District (DRAFT) (RPC February 2015),
Proposed Wildlife Overlay District (DRAFT) (RPC August 2016),
Conserved Public and Private Lands (UVM 2010, ANR 2012 and Town 2012),
Deer Wintering (ANR 2011),
Waterbodies (VHD 2008),
Road centerline (VTrans 2015),
Parcels (TerraMap 2016),
Town Boundaries (RPC 2011 and VCGI 2012).



For planning purposes only
Not for regulatory interpretation
Map last revised: April 17, 2017