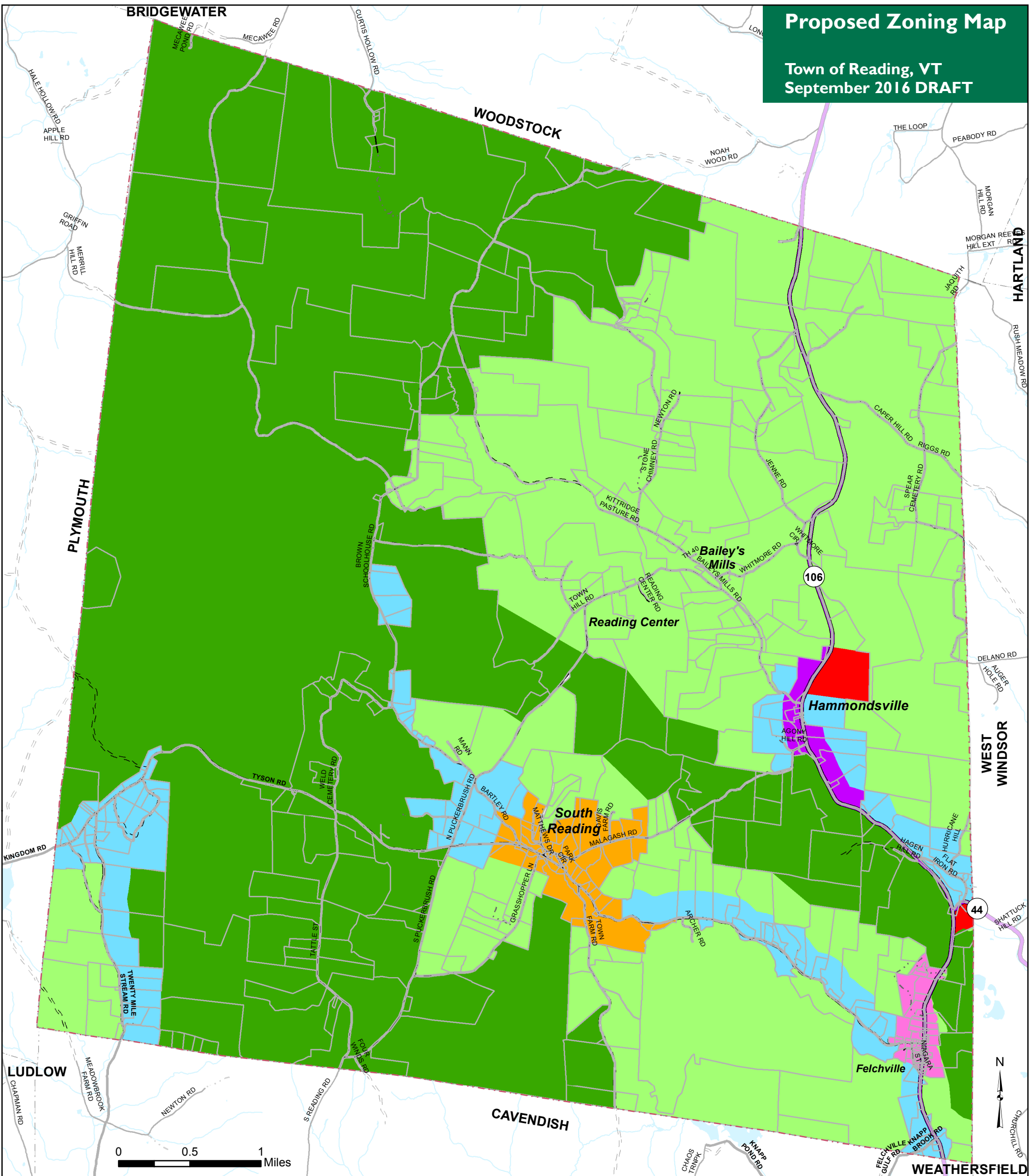


Proposed Zoning Map

Town of Reading, VT
September 2016 DRAFT



VT State Plane, Meters, NAD 83
Data depicted on this map are for planning purposes only and are based on best available information. Some of the data do not line up.

Proposed zoning (last changed September 2016)

- Rural/ Conservation (RC-25)
- Rural Residential (RR-10)
- Rural Residential (RR-5)
- Residential/ Commercial (Hammondsville) (RC-A)
- Rural Residential (South Reading) (R-1)
- Residential/ Commercial (Felchville) (RC-B)
- Industrial/ Mining (IND)
- VT State Highway
- Class 2 Town Highway
- Class 3 Town Highway
- Class 4 Town Highway
- Legal Trail (Reading only)
- Private Road (Reading only)
- River or Stream
- Lake or Pond
- Parcels (TerraMap 2016)
- Town Boundary

Data Sources:
Zoning (DRAFT) (RPC Sept 2016),
Waterbodies (VHD 2008), Road
centerline (VTrans 2015), Parcels
(TerraMap 2016), Town Boundaries
(RPC 2011 and VCGI 2012).



For planning purposes only
Not for regulatory interpretation
Map last revised: September 21, 2016