

Southern Windsor County Park and Ride Annual Report



December 2016

On the first Tuesday of every month (where possible) Southern Windsor County Regional Planning Commission counts the number of vehicles parked in the Park and Ride lots along I-91. The counts are done in the morning between 9am and 11am at exits 7 (Springfield), 8 (Weathersfield/ Ascutney) and 9 (Hartland/Windsor). These parking lots are part of Southeast Vermont Transit's (SEVT, formerly Connecticut River Transit) Upper Valley Commuter Routes which travel up I-91 to the White River Junction VT/ Hanover NH area.

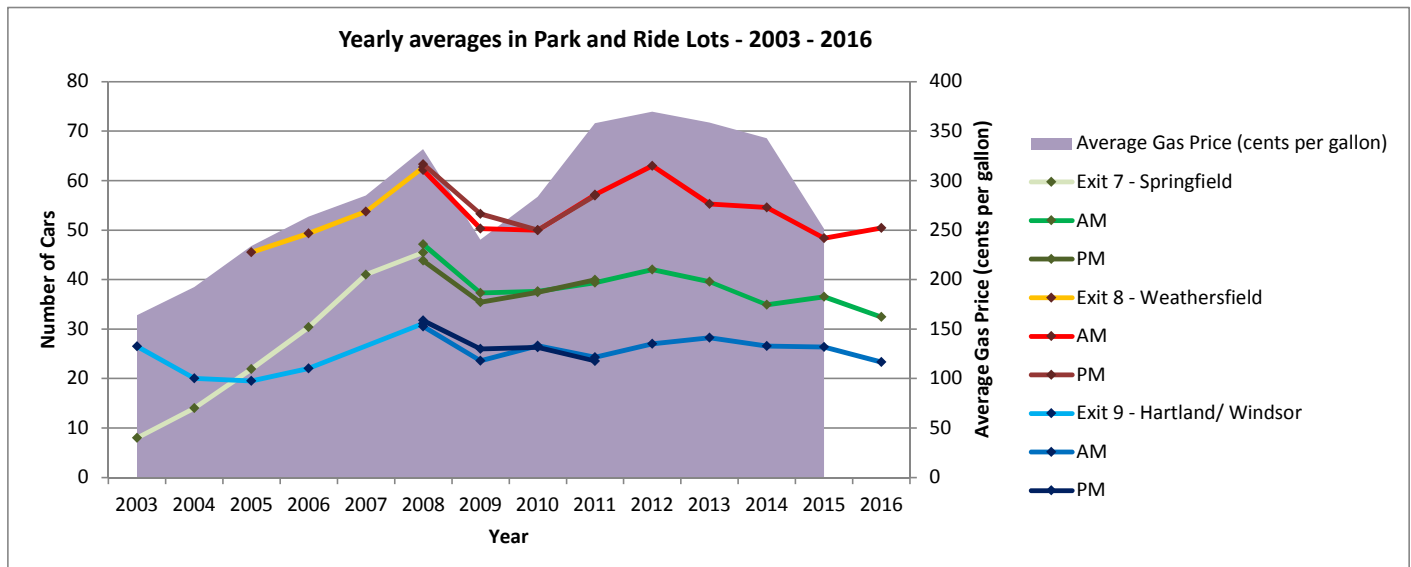
Every year the Vermont Agency of Transportation (VTrans) requests that all regional planning commissions across the state do counts on particular months at particular times.

The region also includes two municipal park and ride lots - on VT-103 in Ludlow next to the fire station, and on VT-106 in Weathersfield just north of VT-131/ Downers. Counts are done on these lots periodically and are available upon request.

Yearly Activity in Park and Ride Lots

| | Exit 7 - Springfield | | | Exit 8 - Weathersfield | | | Exit 9 - Hartland/ Windsor | | | Average Gas Price (cents per gallon) |
|------|----------------------|----|----|------------------------|----|----|----------------------------|----|----|---|
| | AM&PM | AM | PM | AM&PM | AM | PM | AM&PM | AM | PM | |
| 2003 | 8 | | | | | | | | | 163.8 |
| 2004 | 14 | | | | | | | | | 192.3 |
| 2005 | 22 | | | 46 | | | 20 | | | 233.8 |
| 2006 | 30 | | | 49 | | | 22 | | | 263.5 |
| 2007 | 41 | | | 54 | | | | | | 284.9 |
| 2008 | | 47 | 44 | | 62 | 63 | | 31 | 32 | 331.7 |
| 2009 | | 37 | 35 | | 50 | 53 | | 24 | 26 | 240.1 |
| 2010 | | 38 | 37 | | 50 | 50 | | 27 | 26 | 283.6 |
| 2011 | | 39 | 40 | | 57 | 57 | | 24 | 24 | 357.7 |
| 2012 | | 42 | | | 63 | | | 27 | | 369.5 |
| 2013 | | 40 | | | 55 | | | 28 | | 358.4 |
| 2014 | | 35 | | | 55 | | | 27 | | 342.5 |
| 2015 | | 37 | | | 48 | | | 26 | | 251.0 |
| 2016 | | 32 | | | 50 | | | 23 | | Not yet available |

¹ Only one or two counts used for the average
² No counts
³ Hartland P&R was closed from May to September for upgrade.
⁴ Springfield P&R was closed from May to August for upgrade.
 Average Yearly Gas Price from the Energy Information Administration ("Motor Gasoline Retail Prices, US City Average"). Downloaded December 9, 2016.
http://www.eia.gov/totalenergy/data/monthly/pdf/sec9_6.pdf



Monthly Activity in Park and Ride Lots

| | Exit 7 - Springfield | | | Exit 8 - Weathersfield | | | Exit 9 - Hartland/ Windsor | | | Average Gas Price (cents per gallon) |
|-----------------------------------|----------------------|------|-------------------------|------------------------|------|-------------------------|----------------------------|------|-------------------------|---|
| | 2015 | 2016 | % capacity ³ | 2015 | 2016 | % capacity ³ | 2015 | 2016 | % capacity ³ | |
| January | 32 | 34 | 32% | 59 | 46 | 71% | 29 | 18 | 33% | 215.5 |
| February | 41 | 25 | 24% | 51 | 59 | 91% | 30 | 25 | 45% | 201.1 |
| March | 31 | 31 | 29% | 53 | 50 | 77% | 25 | 19 | 35% | 190.3 |
| April | 32 | 32 | 30% | 52 | 46 | 71% | 26 | 24 | 44% | 215.8 |
| May | Closed | 31 | 29% | 39 | 61 | 94% | 26 | 26 | 47% | 234.5 |
| June | Closed | 35 | 33% | 40 | 44 | 68% | 22 | 28 | 51% | 244.8 |
| July | Closed | 30 | 28% | 51 | 54 | 83% | 25 | 20 | 36% | 238 |
| August | Closed | 40 | 38% | 54 | 46 | 71% | 23 | 23 | 42% | 227.9 |
| September | 30 | 33 | 31% | 49 | 46 | 71% | 29 | 25 | 45% | 230.9 |
| October | 42 | 29 | 27% | 39 | 51 | 78% | 17 | 27 | 49% | 232.4 |
| November | 41 | 32 | 30% | 47 | 48 | 74% | 27 | 21 | 38% | 236.1 |
| December | 43 | 37 | 35% | 46 | 54 | 83% | 37 | 24 | 44% | 234.3 |
| Average | 37 | 32 | | 48 | 50 | 78% | 26 | 23 | 42% | Not yet available |
| Ave. percentage of Vermont Plates | 74% | 75% | | 50% | 47% | | 84% | 87% | | |

New England Weekly Gas Price from the Energy Information Administration ("All Grades All Formulations Retail Gasoline Prices") Released 12/09/2016.
<http://www.eia.gov/petroleum/gasdiesel/xls/pswrgvwall.xls> "Data 12" tab

³ Percentage of lot capacity is calculated using the official capacity of the lot. Before their upgrades, Springfield (summer 2015) and Hartland (summer 2014) had additional unpaved area for parking.

