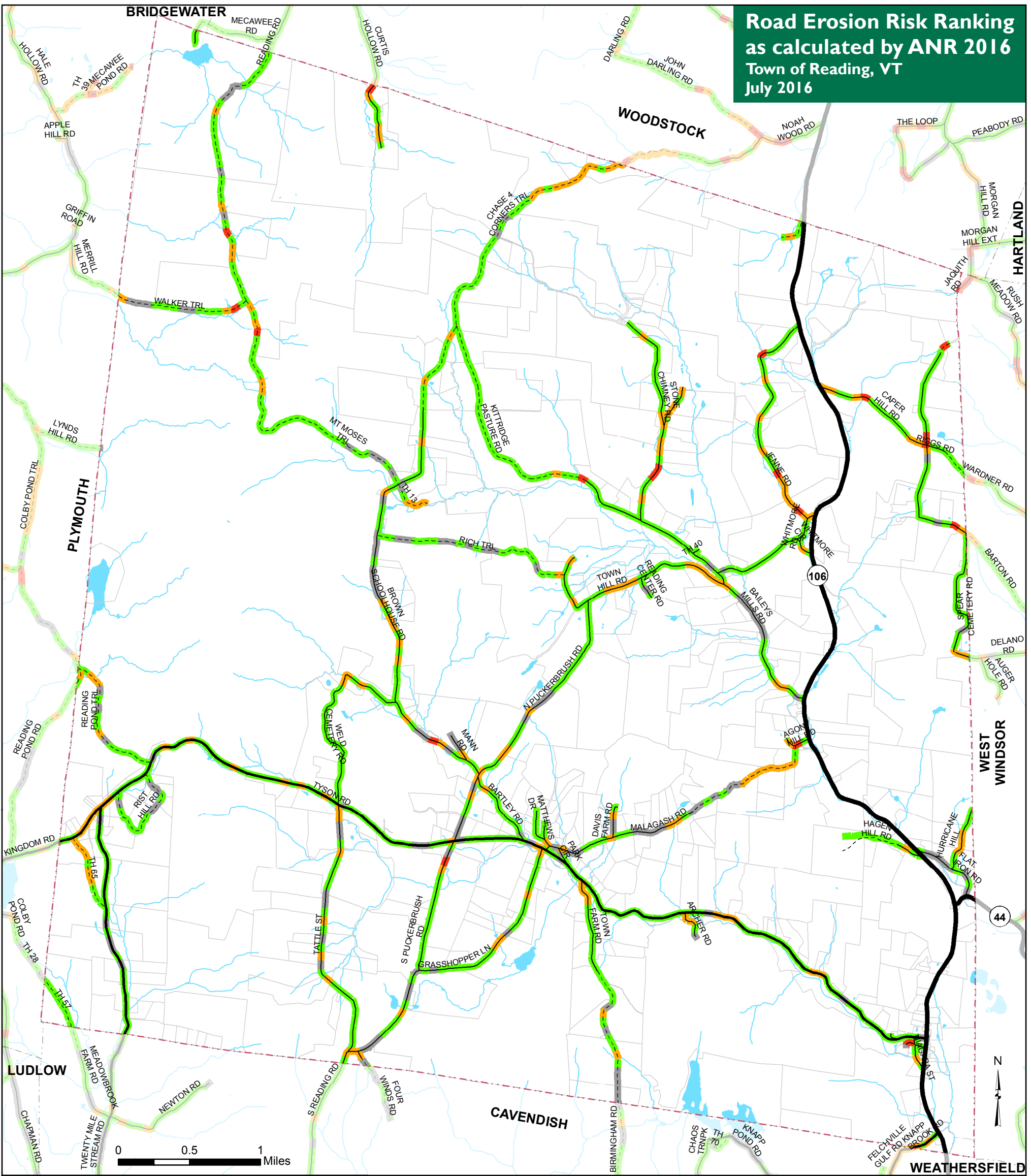
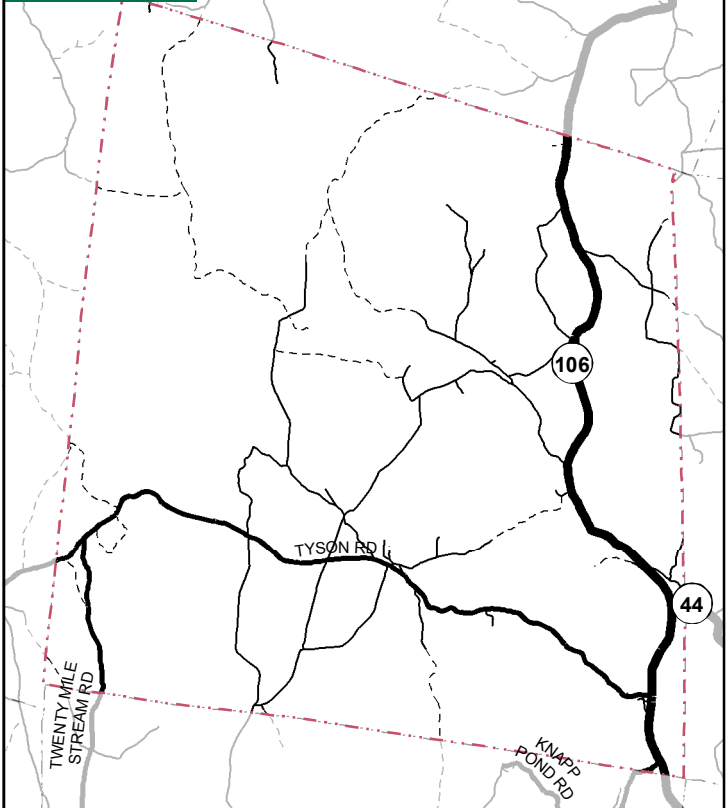


# Road Erosion Risk Ranking as calculated by ANR 2016 Town of Reading, VT July 2016



## Road Class



## Road Erosion Risk Rank

- High Risk
- Moderate Risk
- Low Risk
- No Measured Risk
- VT State Highway (not included in risk assessment)
- Class 2 Town Highway
- Class 3 Town Highway
- Class 4 Town Highway

- River or Stream
- Lake or Pond
- Parcels (Reading only)
- Town Boundary

This map shows predicted erosion risk of 100 meter segments using the protocol developed by Stone Environmental in 2014 for ANR. In 2016 ANR slightly revised this ranking to include paved roads and remove private roads. Locations were identified based on a variety of site factors including but not limited to slope, water features, and soils. Site factors were linked to constraint values and totaled to determine priority ranking from low to high.

For more information see [http://anrmaps.vermont.gov/websites/vgisdata/layers\\_anr/metadata/TransRoad\\_EROSIONRISK.txt](http://anrmaps.vermont.gov/websites/vgisdata/layers_anr/metadata/TransRoad_EROSIONRISK.txt) and [http://gis.vtanr.opendata.arcgis.com/datasets/ca438cfa73ef47b7b044b9b22045fc9b\\_164](http://gis.vtanr.opendata.arcgis.com/datasets/ca438cfa73ef47b7b044b9b22045fc9b_164)

Data Sources: Road Erosion Risk Ranking (ANR July 2016), Roads (VTrans 2015), Waterbodies (VHD 2008), Parcels (Terramap 2016), Town Boundary (Southern Windsor County Regional Planning Commission using Parcels 2011).

VT State Plane, Meters, NAD 83  
Data depicted on this map are for planning purposes only and are based on best available information. Some of the data do not line up.



For planning purposes only  
Not for regulatory interpretation  
Map last revised: July 11, 2016