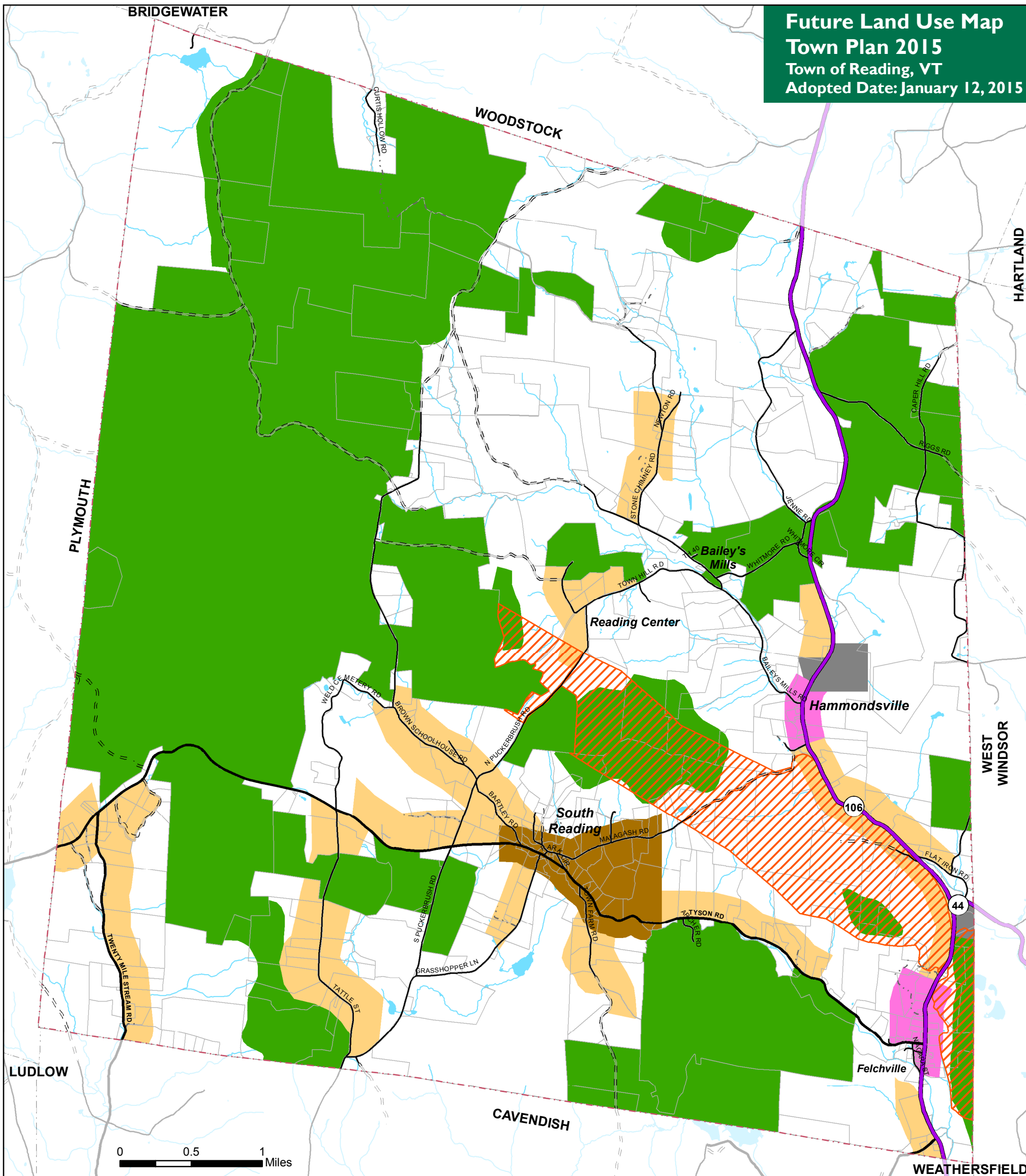


**Future Land Use Map**  
**Town Plan 2015**  
 Town of Reading, VT  
 Adopted Date: January 12, 2015



**Future Land Use Categories**

- Conservation
- Mixed Use
- High Density Residential
- Rural Residential
- Industrial/ Mining
- Forest

Proposed Wildlife Overlay District

- VT State Highway
- Class 2 Town Highway
- Class 3 Town Highway
- Class 4 Town Highway
- Legal Trail (Reading only)
- Private Road (Reading only)

- River or Stream
- Lake or Pond
- Parcels (Reading only)
- Town Boundary

Future land use categories follow definitions in Chapter 7 of the Town Plan.

Conservation Future Land Use Category includes all lands currently conserved (public and private) as well as additional areas delineated in 2005/2010 Future Land Use Map.

VT State Plane, Meters, NAD 83  
 Data depicted on this map are for planning purposes only and are based on best available information. Some of the data do not line up.

Data Sources:  
 Conserved Public Lands (UVM 2010, ANR 2012 and Town 2012),  
 Conserved Private Lands (UVM 2009 and Town 2012), Future Land Use Categories (RPC 2012), Wildlife Overlay District (RPC 2012), Road centerline (VTrans 2012), Waterbodies (VHD 2008), Parcels (TerraMap 2011), Town Boundaries (RPC 2011 and VCGI 2012).



For planning purposes only  
 Not for regulatory interpretation  
 Map last revised: September 24, 2014