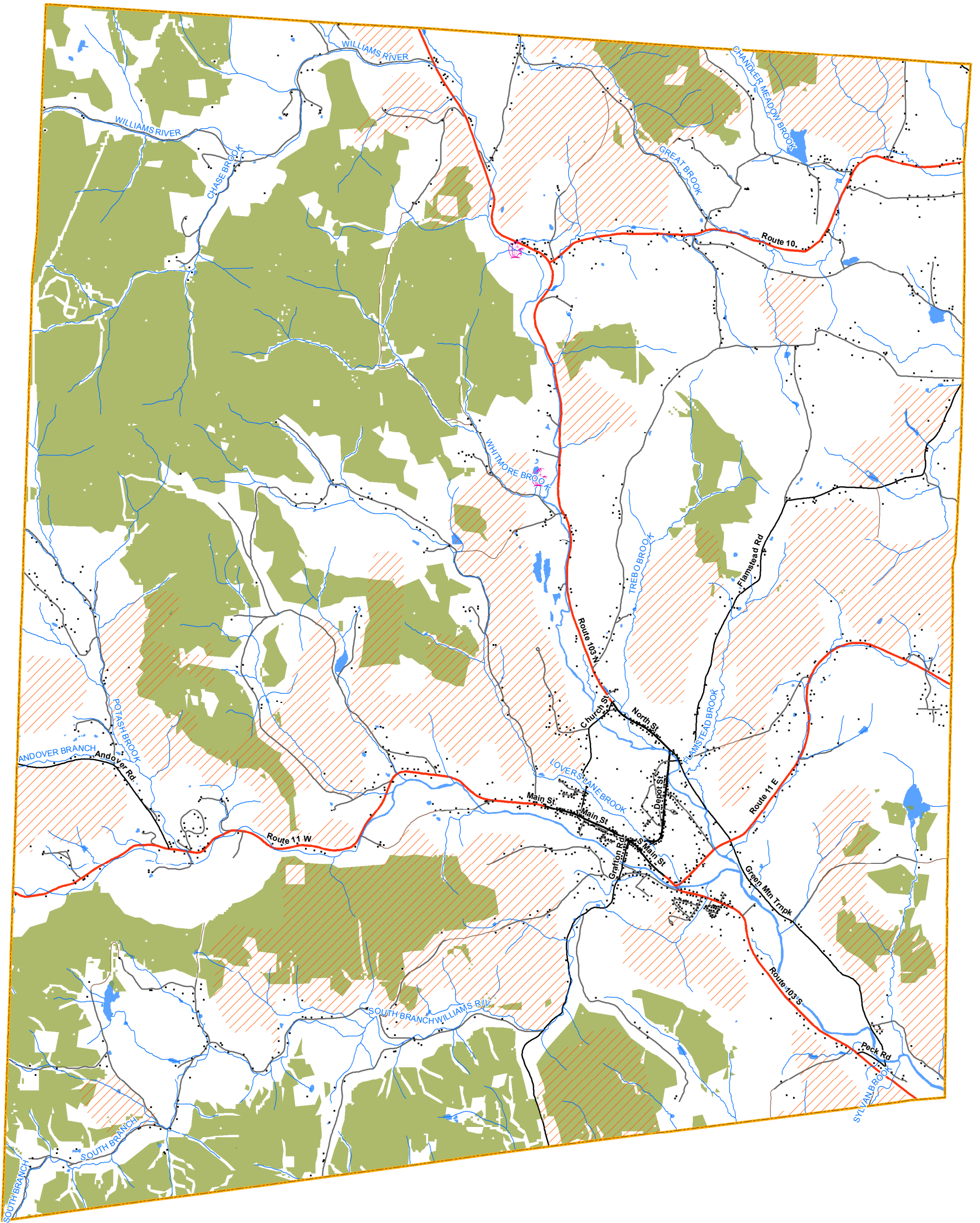


Town of Chester

Wildlife Habitat - 2009

Effective Date: July 21, 2010



0 0.5 1 Miles

VT State Plane
Meters, NAD 83
For planning purposes only
Not for regulatory interpretation
GIS
For info & data - www.vcgi.org

SWCRPC
P.O. Box 320
Ascutney, VT 05030
802-674-9201
www.swcrpc.org
SWCRPC
SOUTHERN WINDSOR COUNTY
REGIONAL PLANNING COMMISSION



- | | | |
|------------------|---------------------|---------------------------|
| Class 1 TH | Deer Wintering Area | Suitable Wildlife Habitat |
| Class 2 TH | RTE Plant Community | Pond |
| Class 3 TH | Forest Land | Building |
| Class 4 TH | Stream | Town Boundary |
| VT State Highway | | |