

Vermont State Register of Historic Places - Individual Listings			
<i>Reference Number</i>	<i>Resource Name</i>	<i>Address</i>	<i>City/Town</i>
1423-1	American Precision Museum	196 Main Street	Windsor
1423-2	Old South Church	146 Main Street	Windsor
1423-3	Main Street Historic District	(see attached)	Windsor
1423-5	St Paul's Episcopal Church	27 State Street (corner of State St and Dunham Ave)	Windsor
1423-6	Court Square Historic District	(see attached)	Windsor
1423-7	Upper Main Street Historic District	(see attached)	Windsor
1423-10	Ascutney Mill Dam Historic District		Windsor
1423-10	Ascutney Mill Dam Historic District (Revised 1999)	(see attached)	Windsor
1423-11	NAMCO Block	1-17 Union Street	Windsor
1423-12	Bertha Burnam House	US Route 5	Windsor
1423-13	Newell Staples House	US Route 5	Windsor
1423-14	Howland Atwood House	US Route 5	Windsor
1423-15	Harold Thompson House	US Route 5	Windsor
1423-16	Marie Dressler House	US Route 5	Windsor
1423-17	Ada Townsend House	US Route 5	Windsor
1423-18	Joseph Pettes House	60 Main St ?	Windsor
1423-19	Robert Bartlett House	US Route 5	Windsor
1423-20	Baptist Church Annex	US Route 5	Windsor
1423-21	Eugene Holzwarth House	US Route 5	Windsor
1423-22	Gould Farm/Weston Farm Complex	US Route 5	Windsor
1423-23	Marshall Wait House	Ascutney Street	Windsor
1423-24	Samuel Patrick House	Ascutney Street	Windsor
1423-25	Armand Vezina House	State & Ascutney Streets	Windsor
1423-26	Windsor State Prison	65-81 State Street	Windsor
1423-27	Stephen Jacob House	70-74 State Street	Windsor
1423-29	U.S. Bridge Over Mill Brook	Bridge#55 Main Street (US Route 5)	Windsor

Source: Vermont State Register of Historic Places (VT Division for Historic Preservation)

National Register of Historic Places - Ascutney Mill Dam Historic District - Contributing Structures			
<i>Reference Number</i>	<i>Resource Name</i>	<i>Details</i>	<i>City/Town</i>
1	Ascutney Mill Dam	Gravity arch dam, 1834	Windsor
2	Power House, 57 Ascutney St	1848, 1864 (foundations 1834)	Windsor
3	Drop Forge/Sawmill, 57 Ascutney St	1864 (moved 1870)	Windsor
4	House, 61 Ascutney St	c. 1800	Windsor
5	House, 78 Union St	1864	Windsor
6	House, 74 Union St	1864	Windsor
7	House, 70 Union St	1864	Windsor

8	House, 68 Union St	1864	Windsor
9	House, 64 Ascutney St	c. 1833	Windsor
10	House, 8 Fairview Ave	c. 1835	Windsor
11	House, 55 Ascutney St	1864	Windsor
12	Shed, 55 Ascutney St	c. 1870-80	Windsor
13	Boarding House, 20 Union St	c. 1864	Windsor
14	Foundation ruins of grist mill	c. 1791	Windsor
15	Stone ruins	c. 1850	Windsor
16	Middle Falls Dam (Robbins & Lawrence Bldg)	c. 1770?, c. 1835	Windsor
17	Robbins & Lawrence Armory (Am. Precision Museum)	1846	Windsor

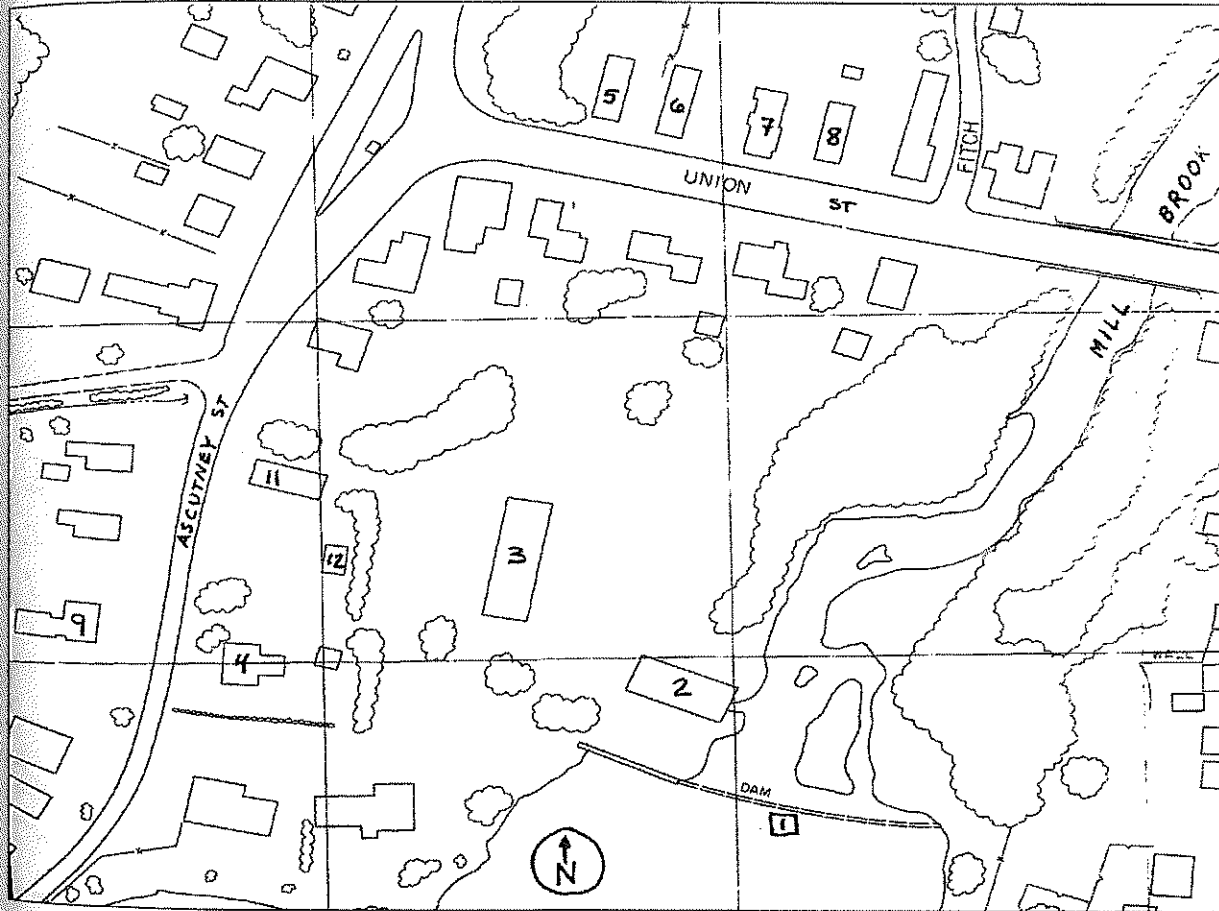
Source: Vermont Division for Historic Preservation Resource Room

STATE OF VERMONT
Division of Historic Preservation
Montpelier VT 05602

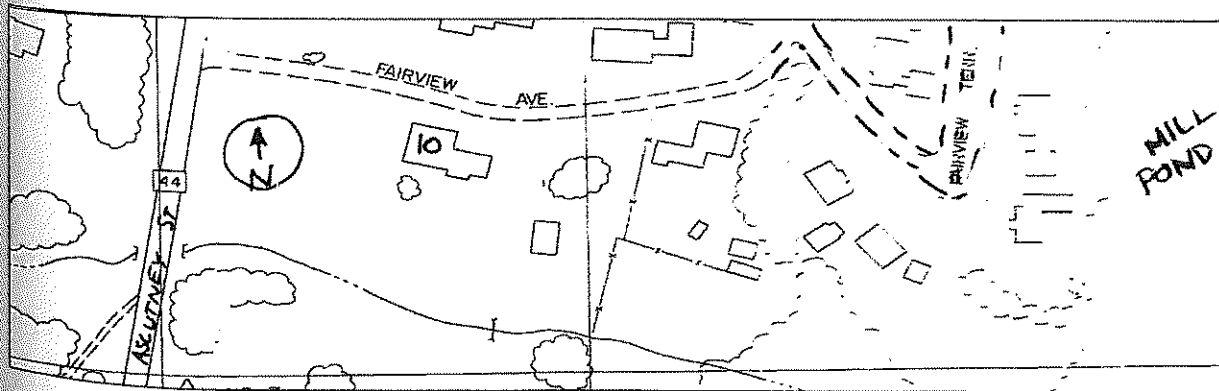
HISTORIC SITES & STRUCTURES SURVEY FORM: 1423-10

MAP: (1. Indicate North in Circle. 2 Represent each structure as an open box. 3. Number each structure inside of its box.)

Site map 1 of 3 for "Industrial Sites on the Mill Brook Historic District": Upper Dam Area



Site map 2 of 3 for "Industrial Sites on the Mill Brook Historic District": Site 10



STATE OF VERMONT
Division of Historic Preservation
Montpelier VT 05602

HISTORIC SITES & STRUCTURES SURVEY FORM: 1423-10

AP: (1. Indicate North in Circle. 2 Represent each structure as an open box. 3. Number each structure inside of its box.)

Use map 3 of 3 for "Industrial Sites on the Mill Brook Historic District": Middle/Lower Dam Area

